

marzocchi ROMBER®

2004



REDESIGNED KNOBS

Updated and innovative cap/adjuster knob design can be found on many of our new 2004 fork models. Designed larger for a better grasp with a wider range of adjustment.

HANDLE BAR CLAMP

All of our dual crown forks can be equipped with a handle-bar clamp that directly mounts to the upper crown for maximum steering precision & strength. The H-bar clamp can be mounted in two positions at 55 mm and 67 mm lengths. A 1/13 mm length version is also available. 888 R has a dedicated handlebar clamp at 62.7 mm length. All H-bar clamps are available as an aftermarket item and can be used with a 31.8 mm bar or a reduction shim can be used with a 25.4 mm bar.



- MARATHON SL**
- 85 mm or 105 mm travel
 - Open Bath Doppio air cartridge
 - ECC 5-position Extension Control Cartridge
 - External positive & negative air
 - Mg Marathon monolite one piece arch & sliders
 - 30 mm alloy tapered stanchions

Colors:
● White



- MARATHON S**
- 105 mm or 120 mm travel
 - ETA Extension Travel Adjustment
 - Open Bath HSCV cartridge
 - Dual coil springs
 - Mg Marathon monolite one piece arch & sliders
 - External air preload
 - External rebound adjuster
 - 30 mm alloy tapered stanchions

Colors:
○ Gloss Black



- MX COMP**
- 85 mm or 100 mm travel
 - Open Bath SSV damping
 - Dual coil springs
 - Mg Marathon monolite one piece arch & sliders
 - External air preload
 - Internal rebound adjuster
 - 30 mm alloy stanchions

Colors:
○ Gloss Black
● Silver



- MX COMP with ETA**
- 105 mm or 120 mm travel
 - 1-side: ETA coil
 - 1-side: Air
 - Open Bath SSV damping
 - Mg Marathon monolite one piece arch & sliders
 - External air preload
 - Internal rebound adjuster
 - 30 mm alloy stanchions
 - 1" steer tube version available

Colors:
○ Gloss Black
● Silver



- MX PRO with ETA**
- 105 mm or 120 mm travel
 - 1-side: ETA coil
 - 1-side: Air
 - Open Bath SSVF damping
 - Mg Marathon monolite one piece arch & sliders
 - External air preload
 - External rebound adjuster
 - 30 mm alloy stanchions

Colors:
○ Gun Metal Grey



- Z150 FR**
- 150 mm travel
 - ETA Extension Travel Adjustment
 - Open Bath HSCV cartridge
 - Dual coil springs
 - Mg FR monolite one piece arch & sliders
 - Forged FR crown w/cryoFit "M" design
 - External air preload
 - External rebound adjuster
 - 32 mm steel stanchions
 - 20 mm QR 20 Pro drop-outs

Colors:
As Shown: 2-Tone Gun Metal Grey & Flat Titanium



- Z150 FR SL**
- 150 mm travel
 - Open Bath Doppio air cartridge
 - ECC 5-position Extension Control Cartridge
 - External positive & negative air
 - Mg FR monolite one piece arch & sliders
 - Forged FR crown w/cryoFit "M" design
 - 32 mm alloy stanchions
 - 20 mm QR 20 Pro drop-outs

Colors:
● Flat Titanium



- Z.1 FR SL**
- 130 mm travel
 - Open Bath Doppio air cartridge
 - ECC 5-position Extension Control Cartridge
 - External positive & negative air
 - Mg FR monolite one piece arch & sliders
 - Forged FR crown w/cryoFit "M" design
 - 32 mm alloy stanchions

Colors:
● Flat Titanium



- Z.1 FR & QR 20 Pro**
- 130 mm travel
 - ETA Extension Travel Adjustment
 - Open Bath HSCV cartridge
 - Dual coil springs
 - Mg FR monolite one piece arch & sliders
 - Forged FR crown w/cryoFit "M" design
 - External air preload
 - External rebound adjuster
 - 32 mm alloy stanchions
 - Standard or 20 mm QR 20 Pro drop-outs

Colors:
○ Flat Black



- Z.1 DROP-OFF I**
- 130 mm travel
 - ETA Extension Travel Adjustment
 - Open Bath SSVF damping
 - Dual coil springs
 - Mg FR monolite one piece arch & sliders
 - Forged FR crown w/cryoFit "M" design
 - External air preload
 - External rebound adjuster
 - 32 mm alloy stanchions

Colors:
○ Flat Gun Metal Grey



- Z.1 DROP-OFF II**
- 130 mm travel
 - Open Bath SSV damping
 - Dual coil springs
 - Mg FR monolite one piece arch & sliders
 - Forged FR crown w/cryoFit "M" design
 - External air preload
 - Internal rebound adjuster
 - 32 mm alloy stanchions

Colors:
○ Flat Gun Metal Grey



- Z1 wedge**
- 130 mm travel
 - Dual SSV damping
 - Dual coil springs
 - Aluminum arch and Aluminum BAM sliders
 - Superlight forged FR crown w/cryoFit "M" design
 - External air preload
 - 30 mm alloy stanchions

Colors:
○ Gloss Black



- DIRT JUMPER I**
- 110 mm travel
 - Open Bath SSV damping
 - Dual coil springs
 - Mg FR monolite one piece arch & sliders
 - Forged FR crown w/cryoFit "M" design
 - Single external rebound adjuster
 - External air preload
 - 32 mm steel stanchions
 - 20 mm QR 20 Pro drop-outs

Colors:
○ Flat Black



- DIRT JUMPER II**
- 110 mm travel
 - Open Bath SSV damping
 - Dual coil springs
 - Mg FR monolite one piece arch & sliders
 - Forged FR crown w/cryoFit "M" design
 - Internal rebound adjuster
 - External air preload
 - 32 mm steel stanchions
 - 20 mm QR 20 Pro drop-outs

Colors:
○ Flat Black



- DIRT JUMPER III**
- 110 mm travel
 - Open Bath SSV damping
 - Dual coil springs
 - Mg FR monolite one piece arch & sliders
 - Forged FR crown w/cryoFit "M" design
 - External air preload
 - 32 mm steel stanchions

Colors:
○ Gloss Black



- Shiver SC**
- 100 mm travel
 - Dual open bath HSCV cartridge
 - Dual coil springs
 - CNC alloy outer tubes
 - Forged CNC crown w/cryoFit "M" design
 - External preload
 - Dual external rebound adjuster
 - 30 mm alloy stanchions
 - 20 mm drop-outs

Colors:
● Silver



- JUNIOR T**
- 170 mm travel
 - Open Bath SSVF damping
 - Dual coil springs
 - Mg FR monolite one piece arch & sliders
 - Forged FR crown w/cryoFit "M" design
 - External preload
 - Internal rebound
 - 32 mm alloy stanchions
 - Standard drop-outs

Colors:
○ Flat Black



- SUPER T PRO**
- 170 mm travel
 - 1-side: Open Bath HSCV cartridge
 - 1-side: Open Bath SSVF damping
 - Dual coil springs
 - Mg FR monolite one piece arch & sliders
 - Forged FR crown w/cryoFit "M" design
 - External preload
 - External rebound adjuster
 - 32 mm alloy stanchions
 - 20 mm QR 20 Pro drop-outs

Colors:
● Flat Titanium



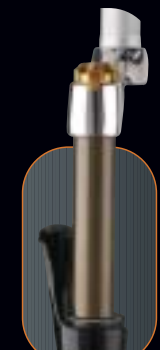
- 888 R**
- 200 mm travel
 - Moto-style clip type spring internal preload adjustability
 - Multi-stage damping circuits
 - Open Bath HSCV cartridges
 - Dual coil springs
 - Mg XFR monolite one piece arch & sliders
 - External adjustable compression and rebound clickers
 - 35 mm alloy stanchions
 - 20 mm dedicated axle

Colors:
○ Flat Black



- Shiver DC**
- 190 mm travel
 - Dual open bath HSCV cartridge
 - Dual coil springs
 - External preload
 - Dual external rebound adjuster
 - CNC alloy top and lower crowns
 - CNC alloy outer tubes
 - 35 mm alloy stanchions
 - 20 mm CNC drop-outs

Colors:
● Silver



EXTENSION CONTROL "OFF"



EXTENSION CONTROL "ON"

EXTENSION CONTROL SYSTEMS

Extension Control (ETA & ECC) offers clear advantages over any other travel adjust system out there. How often do you want less travel on a downhill? Do you really want to take the time to stop & adjust your fork's travel (competitor's systems) every time you hit an uphill or downhill? Our Extension Control Systems are based on a simple performance concept: longer travel (100-150 mm) is great for descents or rocky terrain but sucks on climbs. Therefore, with a flick of the top mounted Extension Control lever the fork will compress under your body weight when riding and stays compressed until the lever is turned back. With ETA, you still have 30 mm of travel no matter how far the fork compresses. With ECC the fork remains locked-down. Descend like a downhiller and climb like a cross-country racer with Marzocchi's Extension Control Systems. Extension Control will give you the best of both worlds.



- MONSTER T & SUPERMONSTER**
- 200 mm and 300 mm travel
 - Open Bath Ø 26 mm Shiver motocross cartridges
 - Dual coil springs
 - Forged aluminum alloy arch & sliders
 - External rebound adjuster
 - External high and low speed compression adjusters
 - 40 mm alloy stanchions
 - 20 mm dedicated axle

Colors:
● Black



- EXPERT 20/24**
- 6061/T6 aluminum, patented "ILOC" integrated leg and crown system
 - Extruded leg integrates the drop-out into a one-piece design
 - Vari-Wall 7075 steer tube
 - Weight-20"/17 oz., 24"/19 oz.
 - Rider weight limit - 100 lbs.

Colors:
○ Black
● Red
● Polished



- EXPERT 20/24**
- 6061 / T6 aluminum, patented "ILOC" integrated leg and crown system
 - Extruded leg integrates the drop-out into a one-piece design
 - Vari-Wall 7075 steer tube
 - Fork weight-20"/24 oz., 24"/26 oz.
 - Rider weight limit - 145 lbs.

Colors:
○ Black
● Red
● Polished



- PRO 20/24**
- 6061 / T6 aluminum, patented "ILOC" integrated leg and crown system
 - Extruded leg integrates the drop-out into a one-piece design.
 - Vari-Wall 7075 prairie steer tube
 - Fork weight-20"/32 oz., 24"/34 oz.
 - Rider weight limit - none

Colors:
○ Black
● Red
● Polished



- BMX DJ**
- 4130 chromoly
 - 14 mm and 3/8" axle
 - one piece 4130 chromoly steer tube
 - Integrated internal headset bolt

Colors:
○ Flat Black



NOTE: Fork colors and graphics are subject to change without notice.

MARZOCCHI.COM