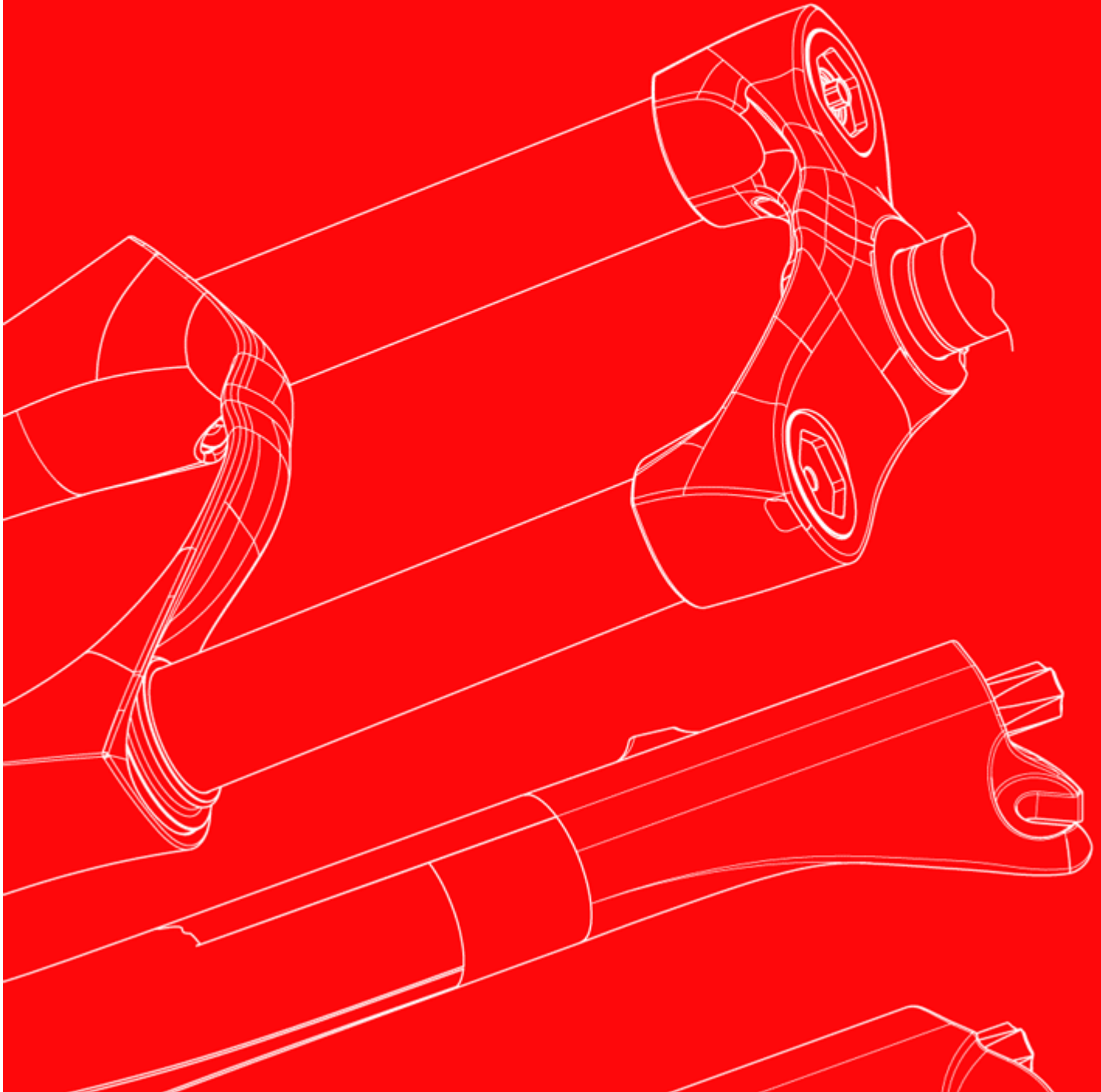


marzocchi
WWW.MARZOCCHI.COM

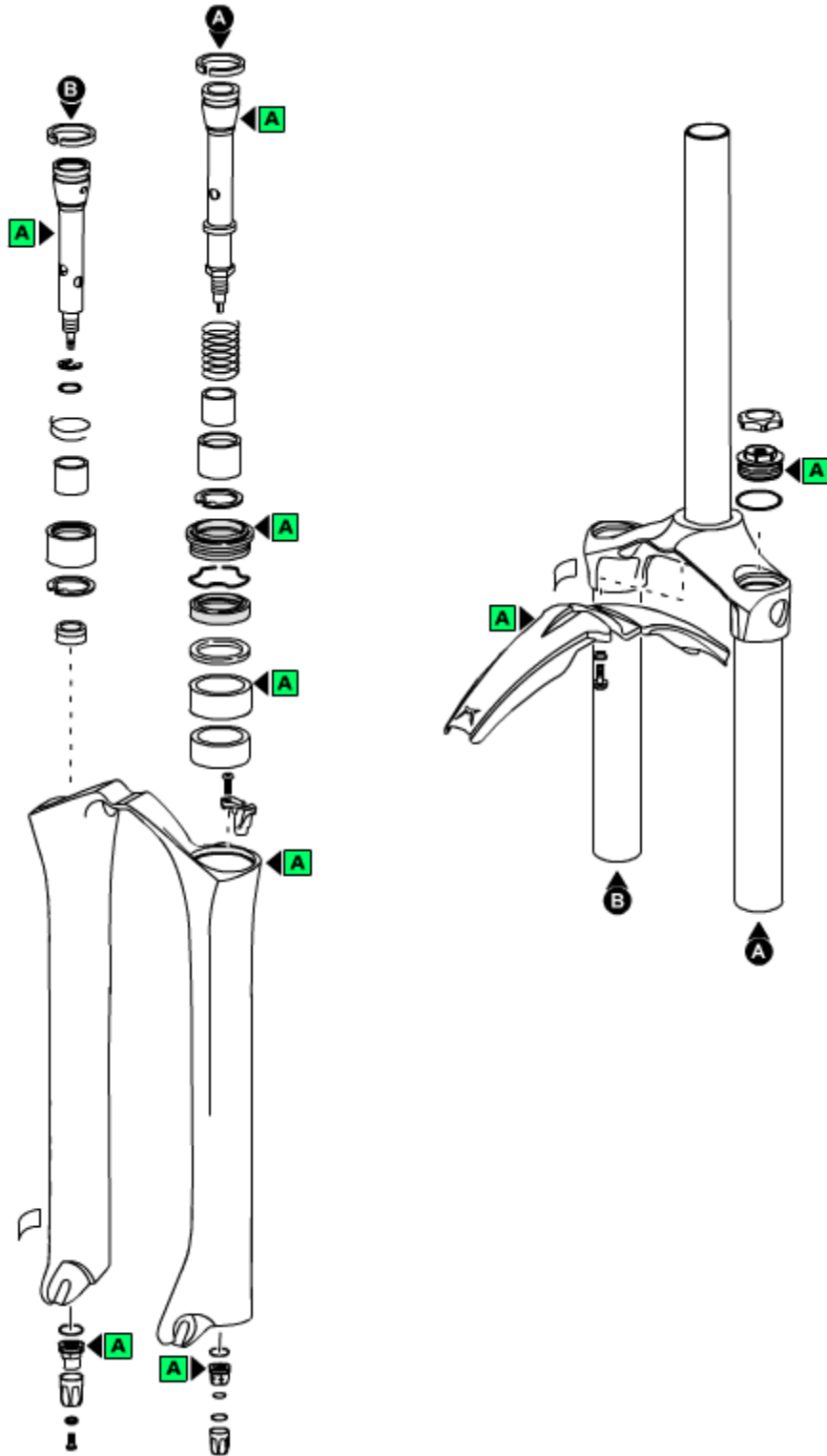


2006 - All Mountain II

Technical instructions

Exploded view - All Mountain II - 130

BOMBARDIER



Rif. Code	Quantity
1 818352/E	1
1 818352/A	1
1 818352/R	1
2 549072KR	2
3 701211/C	2
4 528226	2
8 8031445/C	1
9 524177	2
10 5141420/C	1
10 520341	1
11 5321153>A	1
12 533297	2
13 523261	2
14 528230>A	2
15 538115	1
16 538114	2
19 5321365SS/C	1
19 5321365RR/C	1
19 5321365SR/C	1
19 5321365RS/C	1
20 547681	1
20 547680	1
26 528046	2
27 5321320>A	1
28 528297	1
29 549089>A	1
30 520313	1
31 549067	1
32 5321129>A	1
33 5141283>A	1
34 512105	1
35 547705	1
35 547716	1
36 522403>A	2
37 547713	1
37 547708	1
38 508995/C	1
38 508963CD/R	1
40 528223	1
41 523011	1
43 8031401/C	1
46 5181181	2
48 509150	1
49 805021	1
50 523300	2
51 528030	1
55 8501029/C	1
56 526143RX	2
57 520342AR	2

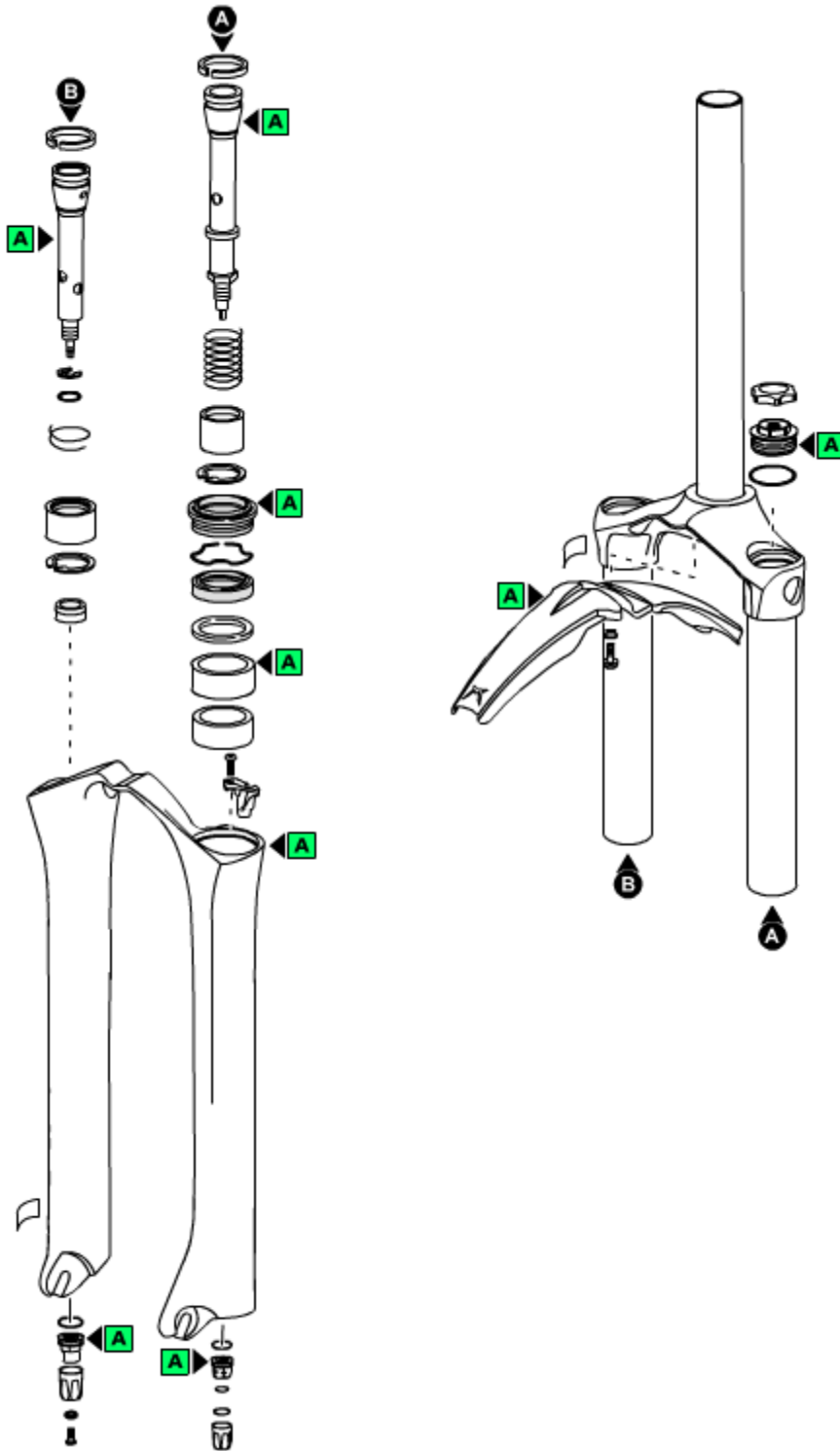
Spare part list - All Mountain II - 130

Rif.	Code	Description	Q.ty in the model
1	818352/E	CROWN+STANC+ALLOY STEM AM2 '06	1
1	818352/A	CROWN+STANC+STEEL STEM AM2 '06	1
1	818352/R	CROWN+STANCHIONS AM2 '06	1
2	549072KR	ALUMINUM RED KNOB	2
3	701211/C	PLUG UNIT	2
4	528226	O-RING	2
8	8031445/C	COMPR.PISTON ROD AM2'06 TR 130	1
9	524177	PISTON RING	2
10	5141420/C	REB.SPRINGS 15MM KIT K=4.5	1
10	520341	SCREW	1
11	5321153>A	CABLE GUIDE	1
12	533297	DUST SEAL DIA.32	2
13	523261	STOP RING	2
14	528230>A	OIL SEAL DIA.32	2
15	538115	UPPER BUSHING DIA.32	1
16	538114	LOWER BUSHING DIA.32	2
19	5321365SS/C	ALL MOU.'06 MONOL-MAGNUM GREY	1
19	5321365RR/C	ALL MOU.'06 MONOL.-FLAT BLACK	1
19	5321365SR/C	ALL MOU.'06 MONOL.-SILVER DUST	1
19	5321365RS/C	ALL MOU.'06 MONOLITE-ECO BLACK	1
20	547681	RH+LH AM2 '06 LABELS-WHIT+RED	1
20	547680	RH+LH AM2 '06 LABELS-WHIT+YELL	1
26	528046	O-RING	2
27	5321320>A (replaces 5321320)	NUT UNIT	1
28	528297	O-RING	1
29	549089>A (replaces 549089KR)	PLASTIC KNOB	1
30	520313	SCREW	1
31	549067	ADJUSTER	1
32	5321129>A	FOOT NUT UNIT	1
33	5141283>A (replaces 5141283)	REBOUND SPRING 82MM	1
34	512105	FOOT BUFFER	1
35	547705	ALLOY STEM -LABELS	1
35	547716	VF2 LABEL	1
36	522403>A	WASHER	2
37	547713	EXT.REBOUND ADJ.MTB'06 LABEL	1
37	547708	EXTER.COMPRESS.ADJUST.-LABEL	1
38	508995/C (replaces 508993/C)	REINFORCED ALLOY STEM+++	1
38	508963CD/R	STEEL STEER TUBE D.30	1
40	528223	O-RING	1
41	523011	STOP RING	1
43	8031401/C	REB.PISTON ROD AM2 '06 TR.130	1
46	5181181	PRELOAD SLEEVE 20MM LONG	2
48	509150	COMPRESS.FERRULE '06	1
49	805021	FERRULE+ VALVE UNIT	1
50	523300	STOP RING	2

51	528030	O-RING	1
55	8501029/C	ALL MOUNTAIN '06 FENDER UNIT	1
56	526143RX	FENDER BUSHINGS	2
57	520342AR	FENDER SCREW	2

Exploded view - All Mountain II - 150

BOMBARDIER



Rif. Code	Quantity
1 818352/E	1
1 818352/A	1
1 818352/R	1
2 549072KR	2
3 701211/C	2
4 528226	2
8 8031445/C	1
9 524177	2
10 5141420/C	1
10 520341	1
11 5321153>A	1
12 533297	2
13 523261	2
14 528230>A	2
15 538115	1
16 538114	2
18 850776/C	0
19 5321365SS/C	1
19 5321365RR/C	1
19 5321365SR/C	1
19 5321365RS/C	1
20 547681	1
20 547680	1
26 528046	2
27 5321320>A	1
28 528297	1
29 549089>A	1
30 520313	1
31 549067	1
32 5321129>A	1
33 5141283>A	1
34 512105	1
35 547705	1
35 547716	1
36 522403>A	2
37 547713	1
37 547708	1
38 508995/C	1
38 508963CD/R	1
40 528223	1
41 523011	1
43 8031401/C	1
48 509150	1
49 805021	1
50 523300	2
51 528030	1
55 8501029/C	1
56 526143RX	2
57 520342AR	2

Spare part list - All Mountain II - 150

Rif.	Code	Description	Q.ty in the model
1	818352/E	CROWN+STANC+ALLOY STEM AM2 '06	1
1	818352/A	CROWN+STANC+STEEL STEM AM2 '06	1
1	818352/R	CROWN+STANCHIONS AM2 '06	1
2	549072KR	ALUMINUM RED KNOB	2
3	701211/C	PLUG UNIT	2
4	528226	O-RING	2
8	8031445/C	COMPR.PISTON ROD AM2'06 TR 130	1
9	524177	PISTON RING	2
10	5141420/C	REB.SPRINGS 15MM KIT K=4.5	1
10	520341	SCREW	1
11	5321153>A	CABLE GUIDE	1
12	533297	DUST SEAL DIA.32	2
13	523261	STOP RING	2
14	528230>A	OIL SEAL DIA.32	2
15	538115	UPPER BUSHING DIA.32	1
16	538114	LOWER BUSHING DIA.32	2
18	850776/C	BUSHINGS DIA 32 KIT	0
19	5321365SS/C	ALL MOU.'06 MONOL-MAGNUM GREY	1
19	5321365RR/C	ALL MOU.'06 MONOL.-FLAT BLACK	1
19	5321365SR/C	ALL MOU.'06 MONOL.-SILVER DUST	1
19	5321365RS/C	ALL MOU.'06 MONOLITE-ECO BLACK	1
20	547681	RH+LH AM2 '06 LABELS-WHIT+RED	1
20	547680	RH+LH AM2 '06 LABELS-WHIT+YELL	1
26	528046	O-RING	2
27	5321320>A (replaces 5321320)	NUT UNIT	1
28	528297	O-RING	1
29	549089>A (replaces 549089KR)	PLASTIC KNOB	1
30	520313	SCREW	1
31	549067	ADJUSTER	1
32	5321129>A	FOOT NUT UNIT	1
33	5141283>A (replaces 5141283)	REBOUND SPRING 82MM	1
34	512105	FOOT BUFFER	1
35	547705	ALLOY STEM -LABELS	1
35	547716	VF2 LABEL	1
36	522403>A	WASHER	2
37	547713	EXT.REBOUND ADJ.MTB'06 LABEL	1
37	547708	EXTER.COMPRESS.ADJUST.-LABEL	1
38	508995/C (replaces 508993/C)	REINFORCED ALLOY STEM+++	1
38	508963CD/R	STEEL STEER TUBE D.30	1
40	528223	O-RING	1
41	523011	STOP RING	1
43	8031401/C	REB.PISTON ROD AM2 '06 TR.130	1
48	509150	COMPRESS.FERRULE '06	1
49	805021	FERRULE+ VALVE UNIT	1
50	523300	STOP RING	2

51	528030	O-RING	1
55	8501029/C	ALL MOUNTAIN '06 FENDER UNIT	1
56	526143RX	FENDER BUSHINGS	2
57	520342AR	FENDER SCREW	2

Technical characteristics: Technical characteristics

Single-crown fork with \varnothing 30mm legs.

Available travels: 130mm, 150 mm.

Right fork leg damping element: air.

Left fork leg damping element: air.

Right fork leg damping system: VF2 pumping element with external rebound adjustment.

Left fork leg damping system: Pumping rod with compression setting by external adjuster.

The stanchion tubes are pressed into the crown with a cryogenic process.

Lubrication and cooling of the parts subject to friction with a specially formulated oil.

Steer tube: steel or (optional) reinforced aluminium, 1-1/8", threadless.

Crown: aluminium alloy forged and CNC machined.

Stanchions: anodised aluminium.

One-piece assembly: made of magnesium alloy cast and CNC machined for lighter weight and more stiffness.

Sliding bushings: made of friction-free and wear-free material.

Seals: computer designed oil seals that guarantee maximum seal in any condition.

Oil: specially formulated oil that prevents foam and keeps the viscosity unchanged while offering high performance; free from static friction.

Dropout type: standard.

Disk brake mount: Post Mount for 6" disk.

Max wheel size: 2.8" x 26".

Tightening torques

Components	Tightening torque (Nm)
Adjuster locking screws	2±0,5
Fender fixing screws	6±1
Fork leg top caps	10±1
Pumping element/cartridge bottom nuts	10±1

Air pressures

Positive air pressure

User weight		Air pressure	
kg.	lb.	bar	psi
55 - 70	121 - 154	2,00 - 2,75	2.900,00 - 3.987,50
70 - 80	154 - 176	2,40 - 3,10	3.480,00 - 4.495,00
80 - 95	176 - 209	2,90 - 3,80	4.205,00 - 5.510,00
95 - 110+	209 - 242	3,60 - 4,50	5.220,00 - 6.525,00

All Mountain II - 130 -
All Mountain II - 150 -

Diagnosics

Finding the problem	Finding the possible cause	Possible solutions proposed
Fork doesn't get full travel	Oil level too high	Check oil levels
Fork doesn't get full travel	Spring rate too stiff	Change to softer spring rate
Fork extends too quickly; harsh top-out after impacts	Rebound damping is not enough	Increase rebound damping
Fork extends too quickly; harsh top-out after impacts	Rebound damping is not enough	Replace the oil (SAE 7.5) with one of higher viscosity index
Fork has too much sag	Oil is too fluid	Check oil levels
Fork has too much sag	Spring rate too soft	Change to stiffer spring rate
Fork has too much sag	Spring rate too soft	Increase spring preload by replacing the preload tube
Fork is "sticky"; fork does not perform as new	Dirty sealing rings; fork needs to be serviced	Renew all seals
Fork is too soft, but the sag is the one recommended	Compression damping is not enough	Increase compression damping by changing oil volumes
Fork is too soft, needs more than the maximum preload	Oil is too fluid	Check oil levels
Fork is too soft, needs more than the maximum preload	Spring rate too soft	Change to stiffer spring rate
Fork stays down or "packs up" during multiple impacts	Rebound damping is too high	Decrease rebound damping with the relevant register
Front wheel tends to tuck under while turning left or right	Rebound damping is too high	Decrease rebound damping with the relevant register
Front wheel tends to tuck under while turning left or right	Spring rate too soft	Change to stiffer spring rate
Heavy amount of oil on stanchions; oil dripping down legs	Sealing rings damaged	Renew all seals
Heavy amount of oil on stanchions; oil dripping down legs	The stanchion tubes could be damaged	Have the stanchions be checked
Knocking sound during rebound, but no harsh top-out	Rebound damping is too high	Decrease rebound damping with the relevant register
Loss of sensitivity	Old oil	Change the oil
Loss of sensitivity	Sliding bushes worn	Renew the sliding bushes
Oil leaking from the bottom of the fork leg	Bottom nut/screw loose	Tighten the nut or screw
Oil ring on stanchions	Sealing rings dirty	Renew all seals