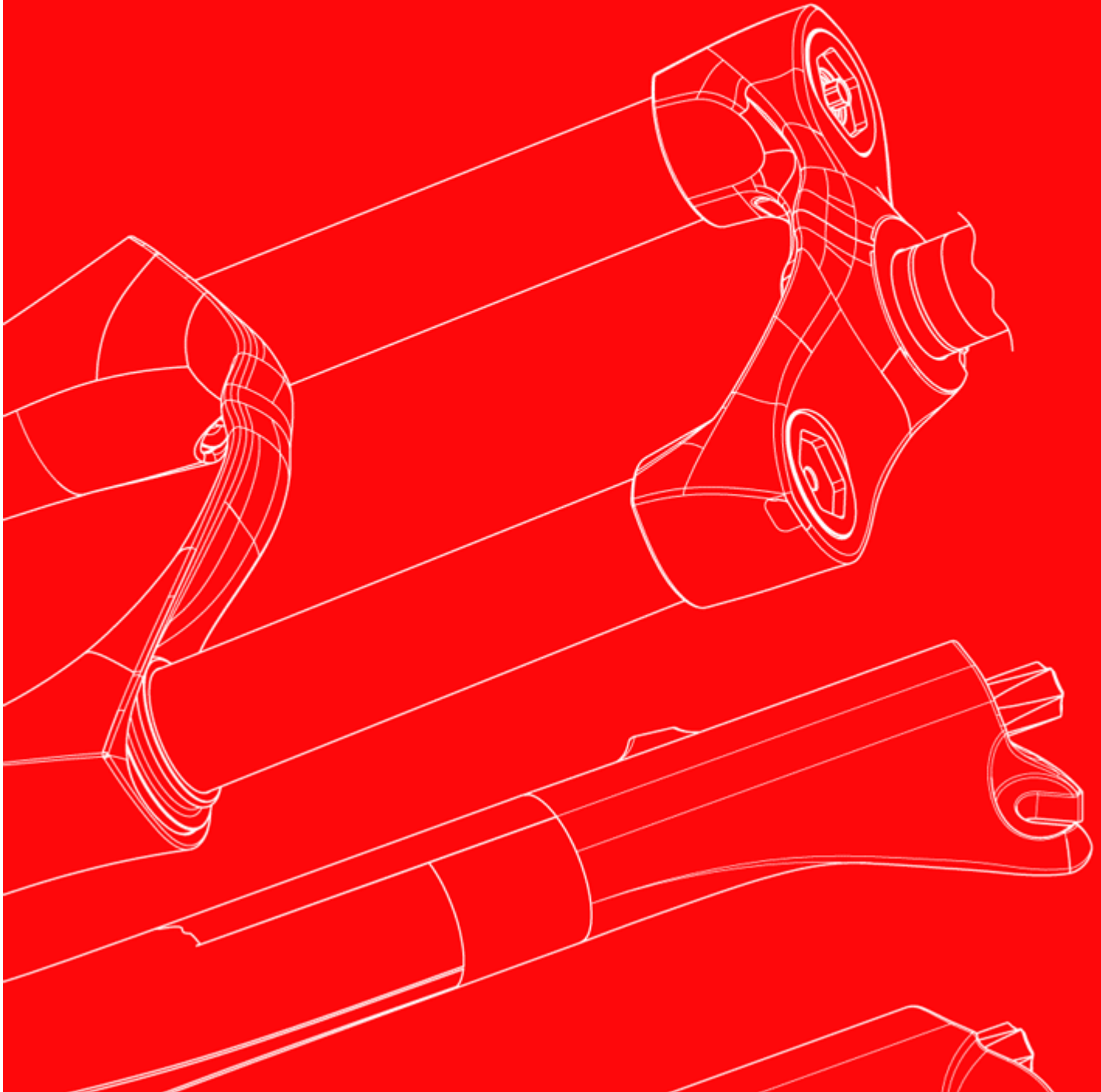


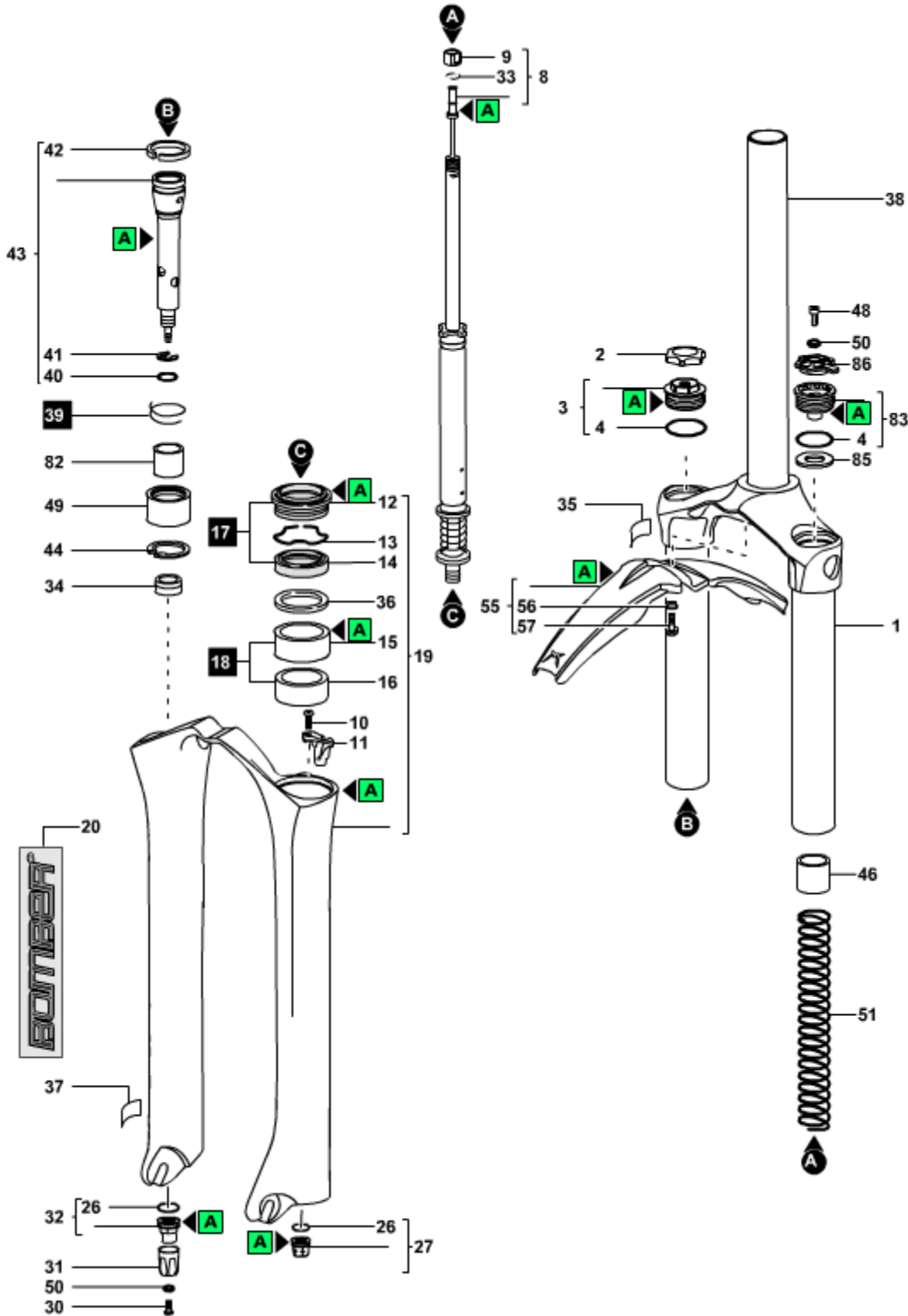
**marzocchi**  
WWW.MARZOCCHI.COM



## **2006 - All Mountain II ETA**

**Technical instructions**

**Exploded view - All Mountain II ETA - 130**



Rif. Code	Quantity
1 818352/E	1
1 818352/A	1
1 818352/R	1
2 549072KR	1
3 701211/C	1
4 528226	2
8 703769LA/C	1
9 521142IW>A	1
10 5141420/C	1
10 520341	1
11 5321153>A	1
12 533297	2
13 523261	2
14 528230>A	2
15 538115	2
16 538114	2
19 5321365SS/C	1
19 5321365RR/C	1
19 5321365SR/C	1
19 5321365RS/C	1
20 547681	1
26 528046	2
27 5321130>B	1
30 520313	1
31 549067	1
32 5321129>A	1
33 528243	1
34 512105	1
35 547705	1
35 547707	1
35 547716	1
37 547713	1
38 508995/C	1
38 508963CD/R	1
40 528223	1
41 523011	1
42 524177	1
43 8031401/C	1
43 5141278/C	1
44 523300	1
46 5181293	1
48 520362	1
49 805021	1
50 522244AA	2
55 8501029/C	1
56 526143RX	2
57 520342AR	2
82 5181181	1
83 701531/C	1
86 549100KR	1

**All Mountain II ETA - 130 - Oil levels**

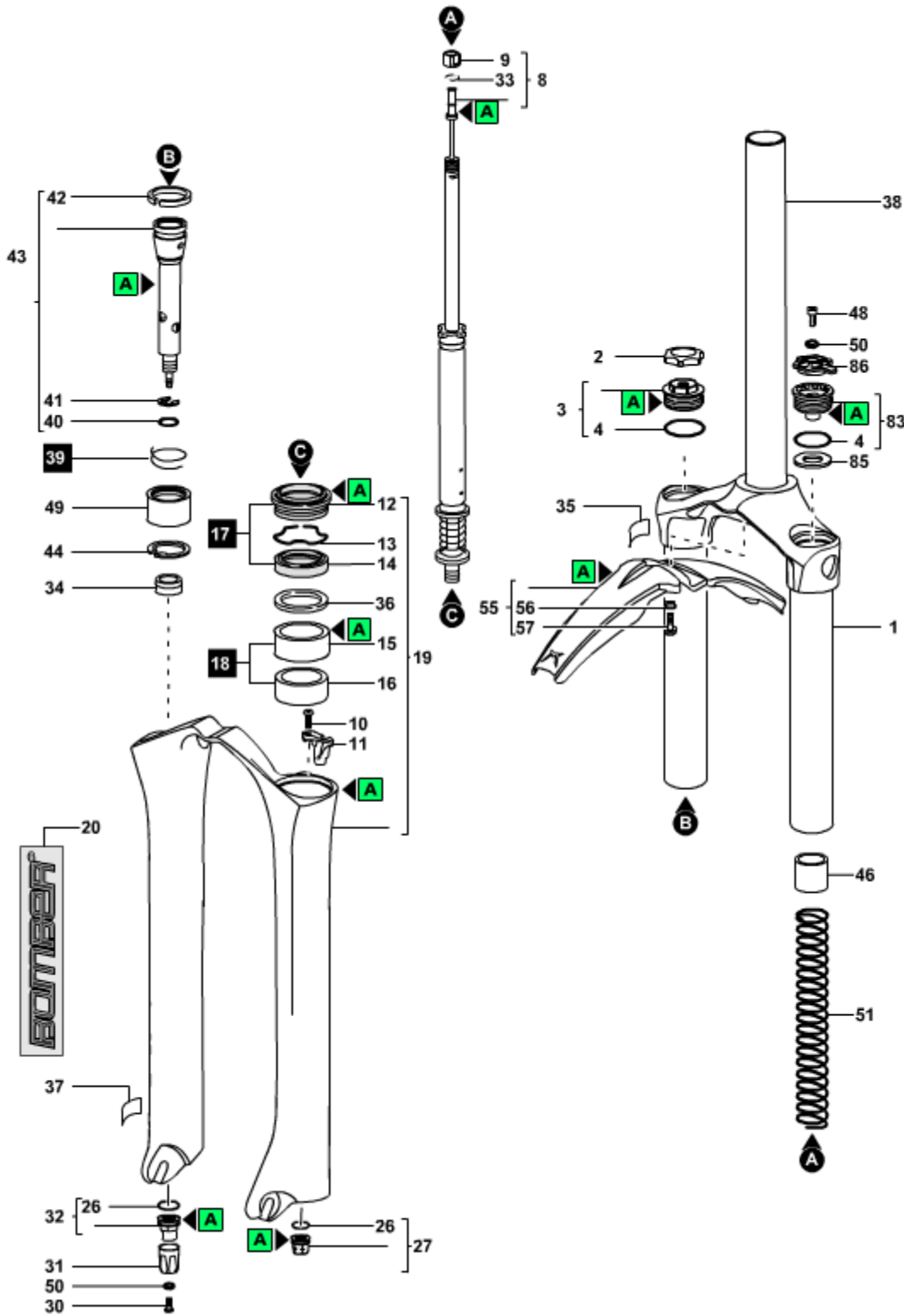
Position	Oil type	Quantity (cc)
Right fork leg	SAE 7,5 - 550013	160
Left fork leg	SAE 7,5 - 550013	160

**Spare part list - All Mountain II ETA - 130**

Rif.	Code	Description	Q.ty in the model
1	818352/E	<b>CROWN+STANC+ALLOY STEM AM2 '06</b>	1
1	818352/A	<b>CROWN+STANC+STEEL STEM AM2 '06</b>	1
1	818352/R	<b>CROWN+STANCHIONS AM2 '06</b>	1
2	549072KR	<b>ALUMINUM RED KNOB</b>	1
3	701211/C	<b>PLUG UNIT</b>	1
4	528226	<b>O-RING</b>	2
8	703769LA/C	<b>ETA CARTR.AM2 '06 TR.130</b>	1
9	521142IW>A	<b>NUT</b>	1
10	5141420/C	<b>REB.SPRINGS 15MM KIT K=4.5</b>	1
10	520341	<b>SCREW</b>	1
11	5321153>A	<b>CABLE GUIDE</b>	1
12	533297	<b>DUST SEAL DIA.32</b>	2
13	523261	<b>STOP RING</b>	2
14	528230>A	<b>OIL SEAL DIA.32</b>	2
15	538115	<b>UPPER BUSHING DIA.32</b>	2
16	538114	<b>LOWER BUSHING DIA.32</b>	2
19	5321365SS/C	<b>ALL MOU.'06 MONOL-MAGNUM GREY</b>	1
19	5321365RR/C	<b>ALL MOU.'06 MONOL.-FLAT BLACK</b>	1
19	5321365SR/C	<b>ALL MOU.'06 MONOL.-SILVER DUST</b>	1
19	5321365RS/C	<b>ALL MOU.'06 MONOLITE-ECO BLACK</b>	1
20	547681	<b>RH+LH AM2 '06 LABELS-WHIT+RED</b>	1
26	528046	<b>O-RING</b>	2
27	5321130>B	<b>FOOT NUT UNIT</b>	1
30	520313	<b>SCREW</b>	1
31	549067	<b>ADJUSTER</b>	1
32	5321129>A	<b>FOOT NUT UNIT</b>	1
33	528243	<b>O-RING</b>	1
34	512105	<b>FOOT BUFFER</b>	1
35	547705	<b>ALLOY STEM -LABELS</b>	1
35	547707	<b>ETA 06- LABEL</b>	1
35	547716	<b>VF2 LABEL</b>	1
37	547713	<b>EXT.REBOUND ADJ.MTB'06 LABEL</b>	1
38	508995/C (replaces 508993/C)	<b>REINFORCED ALLOY STEM+++</b>	1
38	508963CD/R	<b>STEEL STEER TUBE D.30</b>	1
40	528223	<b>O-RING</b>	1
41	523011	<b>STOP RING</b>	1
42	524177	<b>PISTON RING</b>	1
43	8031401/C	<b>REB.PISTON ROD AM2 '06 TR.130</b>	1
43	5141278/C	<b>SPRING K=5,0 ETA'06 130-150</b>	1
44	523300	<b>STOP RING</b>	1
46	5181293	<b>PRELOAD SLEEVE 20MM LONG</b>	1
48	520362	<b>SCREW</b>	1
49	805021	<b>FERRULE+ VALVE UNIT</b>	1
50	522244AA	<b>WASHER</b>	2
55	8501029/C	<b>ALL MOUNTAIN '06 FENDER UNIT</b>	1
56	526143RX	<b>FENDER BUSHINGS</b>	2
57	520342AR	<b>FENDER SCREW</b>	2

82	5181181	<b>PRELOAD SLEEVE 20MM LONG</b>	1
83	701531/C	<b>ETA PLUG UNIT-AM2 '06</b>	1
86	549100KR	<b>ETA KNOB</b>	1

**Exploded view - All Mountain II ETA - 150**



Rif. Code	Quantity
1 818352/E	1
1 818352/A	1
1 818352/R	1
2 549072KR	1
3 701211/C	1
4 528226	2
8 703768KM/C	1
9 521142IW>A	1
10 5141420/C	1
10 520341	1
11 5321153>A	1
12 533297	2
13 523261	2
14 528230>A	2
15 538115	2
16 538114	2
19 5321365SS/C	1
19 5321365RR/C	1
19 5321365SR/C	1
19 5321365RS/C	1
20 547681	1
26 528046	2
27 5321130>B	1
30 520313	1
31 549067	1
32 5321129>A	1
33 528243	1
34 512105	1
35 547705	1
35 547707	1
35 547716	1
37 547713	1
38 508995/C	1
38 508963CD/R	1
40 528223	1
41 523011	1
42 524177	1
43 8031401/C	1
43 5141278/C	1
44 523300	1
46 5181293	1
48 520362	1
49 805021	1
50 522244AA	2
55 8501029/C	1
56 526143RX	2
57 520342AR	2
83 701531/C	1
86 549100KR	1

**All Mountain II ETA - 150 - Oil levels**

Position	Oil type	Quantity (cc)
Right fork leg	SAE 7,5 - 550013	160
Left fork leg	SAE 7,5 - 550013	160

**Spare part list - All Mountain II ETA - 150**

Rif.	Code	Description	Q.ty in the model
1	818352/E	<b>CROWN+STANC+ALLOY STEM AM2 '06</b>	1
1	818352/A	<b>CROWN+STANC+STEEL STEM AM2 '06</b>	1
1	818352/R	<b>CROWN+STANCHIONS AM2 '06</b>	1
2	549072KR	<b>ALUMINUM RED KNOB</b>	1
3	701211/C	<b>PLUG UNIT</b>	1
4	528226	<b>O-RING</b>	2
8	703768KM/C	<b>ETA CARTR.AM2 '06 TR.150</b>	1
9	521142IW>A	<b>NUT</b>	1
10	5141420/C	<b>REB.SPRINGS 15MM KIT K=4.5</b>	1
10	520341	<b>SCREW</b>	1
11	5321153>A	<b>CABLE GUIDE</b>	1
12	533297	<b>DUST SEAL DIA.32</b>	2
13	523261	<b>STOP RING</b>	2
14	528230>A	<b>OIL SEAL DIA.32</b>	2
15	538115	<b>UPPER BUSHING DIA.32</b>	2
16	538114	<b>LOWER BUSHING DIA.32</b>	2
19	5321365SS/C	<b>ALL MOU.'06 MONOL-MAGNUM GREY</b>	1
19	5321365RR/C	<b>ALL MOU.'06 MONOL.-FLAT BLACK</b>	1
19	5321365SR/C	<b>ALL MOU.'06 MONOL.-SILVER DUST</b>	1
19	5321365RS/C	<b>ALL MOU.'06 MONOLITE-ECO BLACK</b>	1
20	547681	<b>RH+LH AM2 '06 LABELS-WHIT+RED</b>	1
26	528046	<b>O-RING</b>	2
27	5321130>B	<b>FOOT NUT UNIT</b>	1
30	520313	<b>SCREW</b>	1
31	549067	<b>ADJUSTER</b>	1
32	5321129>A	<b>FOOT NUT UNIT</b>	1
33	528243	<b>O-RING</b>	1
34	512105	<b>FOOT BUFFER</b>	1
35	547705	<b>ALLOY STEM -LABELS</b>	1
35	547707	<b>ETA 06- LABEL</b>	1
35	547716	<b>VF2 LABEL</b>	1
37	547713	<b>EXT.REBOUND ADJ.MTB'06 LABEL</b>	1
38	508995/C (replaces 508993/C)	<b>REINFORCED ALLOY STEM+++</b>	1
38	508963CD/R	<b>STEEL STEER TUBE D.30</b>	1
40	528223	<b>O-RING</b>	1
41	523011	<b>STOP RING</b>	1
42	524177	<b>PISTON RING</b>	1
43	8031401/C	<b>REB.PISTON ROD AM2 '06 TR.130</b>	1
43	5141278/C	<b>SPRING K=5,0 ETA'06 130-150</b>	1
44	523300	<b>STOP RING</b>	1
46	5181293	<b>PRELOAD SLEEVE 20MM LONG</b>	1
48	520362	<b>SCREW</b>	1
49	805021	<b>FERRULE+ VALVE UNIT</b>	1
50	522244AA	<b>WASHER</b>	2
55	8501029/C	<b>ALL MOUNTAIN '06 FENDER UNIT</b>	1
56	526143RX	<b>FENDER BUSHINGS</b>	2
57	520342AR	<b>FENDER SCREW</b>	2

83	701531/C	<b>ETA PLUG UNIT-AM2 '06</b>	1
86	549100KR	<b>ETA KNOB</b>	1

**Technical characteristics: Technical characteristics**

---

Single-crown fork with  $\varnothing$  30mm legs.

**Available travels:** 130mm, 150 mm.

**Right fork leg damping element:** air.

**Left fork leg damping element:** spring.

**Right fork leg damping system:** VF2 pumping element with external rebound adjustment.

**Left fork leg damping system:**ETA cartridge.

The stanchion tubes are pressed into the crown with a cryogenic process.

Lubrication and cooling of the parts subject to friction with a specially formulated oil.

**Steer tube:** steel or (optional) reinforced aluminium, 1-1/8", threadless.

**Crown:** aluminium alloy forged and CNC machined.

**Stanchions:** anodised aluminium.

**One-piece assembly:** made of magnesium alloy cast and CNC machined for lighter weight and more stiffness.

**Sliding bushings:** made of friction-free and wear-free material.

**Seals:** computer designed oil seals that guarantee maximum seal in any condition.

**Oil:** specially formulated oil that prevents foam and keeps the viscosity unchanged while offering high performance; free from static friction.

**Dropout type:** standard.

**Disk brake mount:** Post Mount for 6" disk.

**Max wheel size:** 2.8" x 26".



## Tightening torques

Components	Tightening torque (Nm)
Adjuster locking screws	2±0,5
Cap locknut	6±1
Fender fixing screws	6±1
Fork leg top caps	10±1
Pumping element/cartridge bottom nuts	10±1

## Air pressures

### Positive air pressure

User weight		Air pressure	
kg.	lb.	bar	psi
55 - 70	121 - 154	2,00 - 2,75	2.900,00 - 3.987,50
70 - 80	154 - 176	2,40 - 3,10	3.480,00 - 4.495,00
80 - 95	176 - 209	2,90 - 3,80	4.205,00 - 5.510,00
95 - 110+	209 - 242	3,60 - 4,50	5.220,00 - 6.525,00

## All Mountain II ETA - 130 - Oil levels

Position	Oil type	Quantity (cc)
Right fork leg	SAE 7,5 - 550013	160
Left fork leg	SAE 7,5 - 550013	160

## All Mountain II ETA - 150 - Oil levels

Position	Oil type	Quantity (cc)
Right fork leg	SAE 7,5 - 550013	160
Left fork leg	SAE 7,5 - 550013	160

**Diagnostics**

Finding the problem	Finding the possible cause	Possible solutions proposed
Fork doesn't get full travel	Oil level too high	Check oil levels
Fork extends too quickly; harsh top-out after impacts	Rebound damping is not enough	Increase rebound damping
Fork extends too quickly; harsh top-out after impacts	Rebound damping is not enough	Replace the oil (SAE 7.5) with one of higher viscosity index
Fork has too much sag	Oil is too fluid	Check oil levels
Fork is "sticky"; fork does not perform as new	Dirty sealing rings; fork needs to be serviced	Renew all seals
Fork is too soft, but the sag is the one recommended	Compression damping is not enough	Increase compression damping by changing oil volumes
Fork is too soft, needs more than the maximum preload	Oil is too fluid	Check oil levels
Fork stays down or "packs up" during multiple impacts	Rebound damping is too high	Decrease rebound damping with the relevant register
Front wheel tends to tuck under while turning left or right	Rebound damping is too high	Decrease rebound damping with the relevant register
Heavy amount of oil on stanchions; oil dripping down legs	Sealing rings damaged	Renew all seals
Heavy amount of oil on stanchions; oil dripping down legs	The stanchion tubes could be damaged	Have the stanchions be checked
Knocking sound during rebound, but no harsh top-out	Rebound damping is too high	Decrease rebound damping with the relevant register
Loss of sensitivity	Old oil	Change the oil
Loss of sensitivity	Sliding bushes worn	Renew the sliding bushes
Oil leaking from the bottom of the fork leg	Bottom nut/screw loose	Tighten the nut or screw
Oil ring on stanchions	Sealing rings dirty	Renew all seals