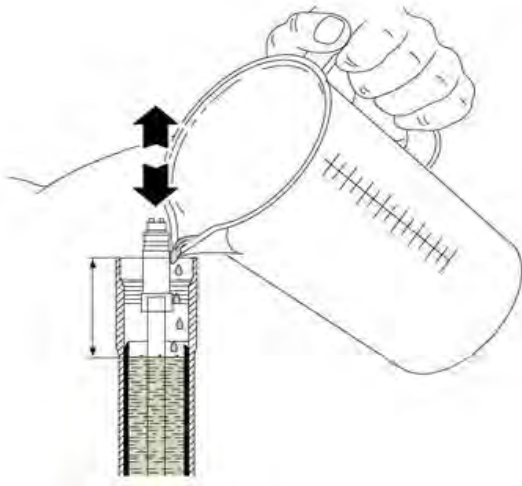


## oil quantity's & levels

### How do I measure an oil level?

Using oil levels is the most accurate way of measuring the volume of oil inside a fork. Oil levels are always measured with the stanchion and dampers fully compressed and with coil springs and spacers removed (where applicable) and is the 'air gap' between the top of the stanchion to the surface of the oil.



### Oil quantity's

Oil quantity's are measure in volume in 'cc', always use a narrow measuring jug for greater accuracy.

Oil quantity chart					
MY	Fork	Measurement	RH		LH
1994	XC51 (sae 7.5w)	Height (mm)	both legs	33	
1994	XC600 (sae 20w)	Height (mm)	both legs	33	
1996	XCR (sae 20w)	Height (mm)	both legs	33	
1996	XC700 (sae 20w)	Height (mm)	both legs	33	
1996	DH3 (sae 20w)	Height (mm)	both legs	33	
1997	Z-1 97	Height (mm)	both legs	45	
1997	Z-2 97 COIL	Height (mm)	both legs	40	
1998	JR T 98-00	Height (mm)	both legs	90	
1998	MONSTER T 98-99-00-01-02	Height (mm)	both legs	90	
1998	MR T 98	Height (mm)	both legs	45	
1998	Z-1 ALU 98-99	Height (mm)	both legs	45	
1998	Z-1 BAM 98	Height (mm)	both legs	45	
1998	Z-2 ALU 98-99	Height (mm)	both legs	40	
1998	Z-2 ATOM 98-99	Height (mm)	both legs	40	
1998	Z-2 BAM 98	Height (mm)	both legs	40	
1998	Z-3 LIGHT 98-99	Height (mm)	both legs	40	
1999	JR T 98-00	Height (mm)	both legs	90	
1999	MONSTER T 98-99-00-01-02	Height (mm)	both legs	90	
1999	MR T 99	Height (mm)	both legs	90	
1999	Z-1 ALU 98-99	Height (mm)	both legs	45	
1999	Z-1 BAM 99	Height (mm)	both legs	50	
1999	Z-1 DROP OFF 99-00	Height (mm)	both legs	45	
1999	Z-1 QR20 99	Height (mm)	both legs	50	

1999	Z-2 ALU 98-99	Height (mm)	both legs	40		
1999	Z-2 ATOM 98-99	Height (mm)	both legs	40		
1999	Z-2 BAM 99	Height (mm)	both legs	40		
1999	Z-2 X-FLY 99 70 mm	Volume (CC)	both legs	50cc		
1999	Z-3 LIGHT 98-99	Height (mm)	both legs	40		
1999	Z-3 LIGHT 99	Height (mm)	both legs	40		
1999	Z-3 QR20 99	Height (mm)	both legs	45		
1999	Z-4 COIL 99	Height (mm)	both legs	40		
1999	Z-5 COIL 99	Height (mm)	both legs	37		
2000	JR T 98-00	Height (mm)	both legs	90		
2000	MONSTER T 98-99-00-01-02	Height (mm)	both legs	90		
2000	MR T QR20 00	Height (mm)	both legs	90		
2000	SUPER T PRO 00	Height (mm)	both legs	90		
2000	Z-1 CR 110MM 00	Height (mm)	both legs	45		
2000	Z-1 CR 130MM 00	Height (mm)	both legs	50		
2000	Z-1 DROP OFF 99-00	Height (mm)	both legs	45		
2000	Z-1 QR20 110MM 00	Height (mm)	both legs	45		
2000	Z-1 QR20 130MM 00	Height (mm)	both legs	50		
2000	Z-1 X-FLY 100 00	Volume (CC)	both legs	85 cc		
2000	Z-2 ATOM 80MM 00	Height (mm)	both legs	40		
2000	Z-2 ATOM RACE 00	Height (mm)	both legs	40		
2000	Z-2 ATOM SPORT 00	Height (mm)	both legs	40		
2000	Z-3 BAM 80 MM 00	Height (mm)	both legs	40		
2000	Z-3 FLYLIGHT 100MM 00	Height (mm)	both legs	40		
2000	Z-3 QR20 110MM 00	Height (mm)	both legs	40		
2000	Z-3 QR20 130MM 00	Height (mm)	both legs	45		
2000	Z-3,5 COIL 00	Height (mm)	both legs	40		
2000	Z-4 FLYLIGHT AIR 00	Height (mm)	both legs	35		
2000	Z-5 FLYLIGHT AIR 00	Height (mm)	both legs	40		
2001	JR T 01	Height (mm)	both legs	90		
2001	MONSTER T 98-99-00-01-02	Height (mm)	both legs	90		
2001	RAC COIL	Height (mm)	both legs	35		
2001	SHIVER DC 01-02	Height (mm)	both legs	70		
2001	SUPER T PRO 01	Height (mm)	both legs	90		
2001	XFLY 100MM 01	Height (mm)	both legs	40		
2001	XFLY 80MM 01	Height (mm)	both legs	40		
2001	Z-1 DROP OFF 01	Height (mm)	both legs	45		
2001	Z-1 DROP OFF QR20+ 01	Height (mm)	both legs	45		
2001	Z-1 MCR 01	Height (mm)	both legs	50		
2001	Z-1 MCR QR20+ 01	Height (mm)	both legs	50		
2001	Z-3 SERIES COIL 01	Height (mm)	both legs	40		
2001	Z-3,5 AIR 100MM 01	Height (mm)	both legs	40		
2001	Z-4 SERIES AIR 01	Height (mm)	both legs	35		
2001	Z-4 SERIES COIL 01	Height (mm)	both legs	40		
2001	Z-5 SERIES AIR 01	Height (mm)	both legs	35		
2001	Z-5 SERIES COIL 01	Height (mm)	both legs	35		
2002	DIRT JUMPER I 110MM 02	Height (mm)	both legs	50		
2002	DIRT JUMPER I 130MM 02	Height (mm)	both legs	45		
2002	DIRT JUMPER II 110MM 02	Height (mm)	both legs	50		
2002	DIRT JUMPER II 80MM 02	Height (mm)	both legs	25		

2002	JR T 170 02	Height (mm)	both legs	90		
2002	JR T QR20 150 02	Height (mm)	both legs	90		
2002	MARATHON S 80-100	Volume (CC)	RH	ECC 115cc	LH	NEG 30cc
2002	MONSTER T 98-99-00-01-02	Height (mm)	both legs	90		
2002	MXC + ECC AIR 80-100 02	Height (mm)	both legs	35		
2002	MXR AIR 80-100 02	Height (mm)	both legs	40		
2002	MXR COIL 80-100 02	Height (mm)	both legs	40		
2002	SHIVER DC 01-02	Height (mm)	both legs	70		
2002	SHIVER SC	Height (mm)	both legs	20		
2002	SUPER T QR20 170 02	Height (mm)	both legs	90		
2002	XFLY 100MM 02	Height (mm)	both legs	40		
2002	XFLY 80MM	Height (mm)	both legs	40		
2002	Z-1 DROP OFF 110-130	Height (mm)	both legs	60		
2002	Z-1 DROP OFF QR20 110-130	Height (mm)	both legs	60		
2002	Z-1 FREE RIDE 110-130 02	Height (mm)	both legs	45		
2002	Z-1 FREE RIDE QR20 110-130	Height (mm)	both legs	60		
2002	Z-1 WEDGE 110-130 02	Height (mm)	both legs	55		
2002	Z-2 ATOM RACE 80-100 02	Height (mm)	both legs	45		
2003	Dirt Jumper 1 Ø32 c.110	Height (mm)	both legs	55		
2003	Dirt Jumper 1 Ø32 c.130	Height (mm)	both legs	55		
2003	Dirt Jumper 1 MQR20 110	Height (mm)	both legs	55		
2003	Dirt Jumper 1 MQR20 130	Height (mm)	both legs	55		
2003	Dirt Jumper 2 Ø32 c.110	Height (mm)	both legs	55		
2003	Dirt Jumper 2 Ø32 c.130	Height (mm)	both legs	55		
2003	Dirt Jumper 2 MQR20 Ø32 c.110	Height (mm)	both legs	55		
2003	Dirt Jumper 2 MQR20 Ø32 c.130	Height (mm)	both legs	55		
2003	Dirt Jumper 3 Ø32 c.110	Height (mm)	both legs	55		
2003	Dirt Jumper 3 Ø32 c.130	Height (mm)	both legs	55		
2003	Dirt Jumper 3 MQR20 110	Height (mm)	both legs	55		
2003	Dirt Jumper 3 MQR20 130	Height (mm)	both legs	55		
2003	Jr. T MQR20 c.170	Height (mm)	both legs	105		
2003	Jr. T c.170	Height (mm)	both legs	105		
2003	Marathon S COIL c.105	Height (mm)	both legs	55		
2003	Marathon S COIL c.85	Height (mm)	both legs	55		
2003	Marathon SL 29"	Volume (CC)	RH	ECC 150cc	LH	NEG 35cc
2003	Marathon SL+ECC c.105	Volume (CC)	RH	ECC 150cc	LH	NEG 35cc
2003	Marathon SL+ECC c.85	Volume (CC)	RH	ECC 150cc	LH	NEG 35cc
2003	Monster T OE c.200	Height (mm)	both legs	115		
2003	Monster T2 OE c.175	Height (mm)	both legs	155		
2003	Monster T2 OE c.200	Height (mm)	both legs	155		
2003	MX Comp 29" coil c.75	Height (mm)	both legs	35		
2003	MX COMP AIR c.105	Height (mm)	both legs	45		
2003	MX COMP AIR c.85	Height (mm)	both legs	45		
2003	MX COMP COIL c.105	Height (mm)	both legs	45		
2003	MX COMP COIL c.85	Height (mm)	both legs	45		
2003	MX COMP+ETA 29"	Height (mm)	both legs	35		
2003	MX COMP+ETA c.105	Height (mm)	both legs	45		
2003	MX COMP+ETA c.85	Height (mm)	both legs	45		
2003	MX PRO AIR c.105 SSVF	Height (mm)	both legs	45		
2003	MX PRO AIR c.85 SSVF	Height (mm)	both legs	45		

2003	MX PRO COIL c.105 SSVF	Height (mm)	both legs	50		
2003	MX PRO COIL c.85 SSVF	Height (mm)	both legs	45		
2003	MX PRO+ETA 29" c.75	Height (mm)	both legs	30		
2003	MX PRO+ETA c.105	Height (mm)	both legs	45		
2003	MX PRO+ETA c.85	Height (mm)	both legs	45		
2003	Shiver D.C. Ø35 USD	Height (mm)	both legs	75		
2003	Shiver S.C. Ø30 USD	Height (mm)	both legs	35		
2003	Super Monster OE c.300	Height (mm)	both legs	135		
2003	Super T MQR20+ c.170	Height (mm)	both legs	75		
2003	Z1 Drop Off c.130	Height (mm)	both legs	55		
2003	Z1 Drop Off MQR20 c.130	Height (mm)	both legs	55		
2003	Z1 FR MQR20 Ø32 c.110	Height (mm)	both legs	55		
2003	Z1 FR MQR20 Ø32 c.130	Height (mm)	both legs	55		
2003	Z1 FR Ø32 c.110	Height (mm)	both legs	55		
2003	Z1 FR Ø32 c.130	Height (mm)	both legs	55		
2003	Z1 FR SL MQR20+ECC Ø32 c.130	Volume (CC)	RH	ECC 165cc	LH	NEG 50cc
2003	Z1 FR SL+ECC Ø32 c.130	Volume (CC)	RH	ECC 165cc	LH	NEG 50cc
2003	Z150 FR QR20 150mm	Height (mm)	both legs	70		
2004	Marathon SL 85mm	Volume (CC)	RH	ECC 150cc	LH	NEG 35cc
2004	Marathon SL 105mm	Volume (CC)	RH	ECC 150cc	LH	NEG 35cc
2004	Marathon S 105mm	Height (mm)	both legs	55		
2004	Marathon S 120mm	Height (mm)	both legs	55		
2004	Z150 FR QR20	Height (mm)	both legs	70		
2004	Z1 FR Pro QR20	Height (mm)	both legs	55		
2004	Z1 FR SL	Volume (CC)	RH	ECC 165cc	LH	NEG 50cc
2004	Z1 FR	Height (mm)	both legs	55		
2004	Z1 Drop OFF 1	Height (mm)	both legs	55		
2004	Z1 Wedge	Height (mm)	both legs	45		
2004	Dirt Jumper 1 QR20	Height (mm)	both legs	55		
2004	Dirt Jumper 2	Height (mm)	both legs	55		
2004	Dirt Jumper 3	Height (mm)	both legs	55		
2004	Shiver SC 100mm	Height (mm)	both legs	35		
2004	Shiver DC	Height (mm)	both legs	75		
2004	Super Monster T	Height (mm)	both legs	135		
2004	888R 200mm	Volume (CC)	both legs	210cc		
2004	Super T Pro QR20	Height (mm)	both legs	75		
2004	Jnr T QR20	Height (mm)	both legs	105		
2004	Jnr T	Height (mm)	both legs	105		
2004	MX Pro ETA 120mm	Height (mm)	both legs	55		
2004	MX Pro ETA 105mm	Height (mm)	both legs	50		
2004	MX Comp ETA 120mm	Height (mm)	both legs	55		
2004	MX Comp ETA 105mm	Height (mm)	both legs	50		
2004	MX Comp Coil 105mm	Height (mm)	both legs	50		
2004	MX Comp Air 105mm	Height (mm)	both legs	45		
2004	MX Comp Air 85mm	Height (mm)	both legs	45		
2004	Drop Off Triple 155mm	Volume (CC)	both legs	245cc		
2004	Drop Off Comp 130 & 110mm	Volume (CC)	both legs	155cc		
2004	EXR Supra 120/ 105/ 85mm	Volume (CC)	both legs	125cc		
2004	EXR Pro Air 120/ 105/ 85mm	Volume (CC)	both legs	130cc		
2004	EXR Pro Coil 120/ 105/ 85mm	Volume (CC)	both legs	125cc		

2004	EXR Pro AirCoil 100mm	Volume (CC)	both legs	125cc		
2004	EXR Comp 100/ 80mm 2004	Volume (CC)	RH	150	LH	grease
2005	66RC c.150	Volume (CC)	both legs	225		
2005	66RC c.170	Volume (CC)	both legs	225		
2005	888RC c.170	Volume (CC)	both legs	225		
2005	888RC c.200	Volume (CC)	both legs	225		
2005	All Mountain 1 c.130-150	Volume (CC)	RH	40	LH	180
2005	All Mountain 2 ETA c.130	Volume (CC)	both legs	175		
2005	All Mountain 3 c.130	Volume (CC)	RH	180	LH	40
2005	All Mountain SL c.130-150	Volume (CC)	both legs	40		
2005	D Street 24" c.80	Volume (CC)	both legs	190		
2005	DJ 1 c.100	Volume (CC)	both legs	190		
2005	DJ 2 c.100	Volume (CC)	both legs	190		
2005	DJ 3 c.100	Volume (CC)	both legs	190		
2005	Jr.T TA c.170	Volume (CC)	both legs	265		
2005	Marathon Race c.80	Volume (CC)	RH	20	LH	40
2005	Marathon SL c.100-120	Volume (CC)	RH	40	LH	20
2005	Marathon XC c.100-120	Volume (CC)	RH	40	LH	135
2005	Monster T c.200	Volume (CC)	both legs	435		
2005	MX Comp + ETA c.105	Volume (CC)	both legs	140		
2005	MX Comp + ETA c.120	Volume (CC)	both legs	140		
2005	MX Comp Air c.105	Volume (CC)	both legs	140		
2005	MX Comp Air c.85	Volume (CC)	both legs	140		
2005	MX Comp Coil c.105	Volume (CC)	both legs	135		
2005	MX PRO + ETA c.105	Volume (CC)	both legs	140		
2005	MX PRO + ETA c.120	Volume (CC)	both legs	140		
2005	Shiver DC USD	Volume (CC)	both legs	175		
2005	Shiver SC USD	Volume (CC)	both legs	140		
2005	Z1 FR 1 TA c.150	Volume (CC)	RH	125	LH	140
2005	Z1 FR 2 TA c.130	Volume (CC)	RH	160	LH	40
2005	Z1 FR 2 TA c.150	Volume (CC)	RH	160	LH	40
2006	66 RC2X c.150	Volume (CC)	both legs	205		
2006	66 RC2X c.170	Volume (CC)	both legs	190		
2006	66 Light c.150	Volume (CC)	RH	70	LH	205
2006	66 Light c.170	Volume (CC)	RH	70	LH	205
2006	66 Light + ETA c.150	Volume (CC)	RH	205	LH	180
2006	66 Light + ETA c.170	Volume (CC)	RH	205	LH	180
2006	66 VF2 c.150	Volume (CC)	both legs	190		
2006	66 VF2 c.170	Volume (CC)	both legs	190		
2006	66 VF2 + ETA c.150	Volume (CC)	both legs	190		
2006	66 VF2 + ETA c.170	Volume (CC)	both legs	190		
2006	66 VF c.150	Volume (CC)	both legs	190		
2006	66 VF c.170	Volume (CC)	both legs	190		
2006	DJ 1 c.80	Volume (CC)	both legs	175		
2006	DJ 1 c.100	Volume (CC)	both legs	175		
2006	DJ 2 c.80	Volume (CC)	both legs	175		
2006	DJ 2 c.100	Volume (CC)	both legs	175		
2006	DJ 3 c.80 (PS)	Volume (CC)	both legs	175		
2006	DJ 3 c.100 (PS)	Volume (CC)	both legs	175		
2006	DJ 3 c.80 (PP)	Volume (CC)	both legs	175		

2006	DJ 3 c.100 (PP)	Volume (CC)	both legs	175		
2006	888 RC2X c.170	Volume (CC)	both legs	220		
2006	888 RC2X c.200	Volume (CC)	both legs	220		
2006	888 RC2 c.170	Volume (CC)	both legs	220		
2006	888 RC2 c.200	Volume (CC)	both legs	220		
2006	888 VF2 c.170	Volume (CC)	both legs	220		
2006	888 VF2 c.200	Volume (CC)	both legs	220		
2006	888 VF c.170	Volume (CC)	both legs	240		
2006	888 VF c.200	Volume (CC)	both legs	240		
2006	Monster T c.200	Volume (CC)	both legs	430		
2006	Jr T c.170	Volume (CC)	both legs	260		
2006	66 LT c.190	Volume (CC)	both legs	200		
2006	All Mountain 1 c.150 Scott	Volume (CC)	RH	155	LH	50
2006	All Mountain 3 c.130	Volume (CC)	both legs	170		
2006	D-Street c.80	Volume (CC)	both legs	185		
2006	Z1 Light + TAS c.130>150	Volume (CC)	both legs	165		
2006	Jr T c.170 [PP]	Volume (CC)	both legs	260		
2007	4X Lopes	Volume (CC)	RH	200	LH	50
2007	4X World Cup	Volume (CC)	RH	200	LH	50
2007	66 RC2 ETA - 160	Volume (CC)	RH	205	LH	205
2007	66 RC2 ETA - 180	Volume (CC)	RH	205	LH	205
2007	66 RC2X - 160	Volume (CC)	RH	190	LH	190
2007	66 RC2X - 180	Volume (CC)	RH	190	LH	190
2007	66 RCV - 160	Volume (CC)	RH	200	LH	200
2007	66 RCV - 180	Volume (CC)	RH	200	LH	200
2007	66 RV - 160	Volume (CC)	RH	190	LH	190
2007	66 RV - 180	Volume (CC)	RH	190	LH	190
2007	66 RV ETA - 160	Volume (CC)	RH	205	LH	205
2007	66 RV ETA - 180	Volume (CC)	RH	205	LH	205
2007	66 SL1 ATA	Volume (CC)	RH	205	LH	10
2007	66 SL2 ATA	Volume (CC)	RH	205	LH	10
2007	888 RC2 - 200	Volume (CC)	RH	240	LH	240
2007	888 RC2X VA - 170	Volume (CC)	RH	240	LH	240
2007	888 RC2X VA - 200	Volume (CC)	RH	240	LH	240
2007	888 RC2X World Cup - 200	Volume (CC)	RH	240	LH	240
2007	888 RCV - 170	Volume (CC)	RH	240	LH	240
2007	888 RCV - 200	Volume (CC)	RH	240	LH	240
2007	888 RV - 170	Volume (CC)	RH	240	LH	240
2007	888 RV - 200	Volume (CC)	RH	240	LH	240
2007	888 SL ATA	Volume (CC)	RH	220	LH	80
2007	All Mountain 1 - 140	Volume (CC)	RH	60	LH	155
2007	All Mountain 1 - 140 - QR	Volume (CC)	RH	60	LH	155
2007	All Mountain 1 - 140 - TA	Volume (CC)	RH	60	LH	155
2007	All Mountain 1 - 160	Volume (CC)	RH	60	LH	155
2007	All Mountain 1 - 160 - QR	Volume (CC)	RH	60	LH	155
2007	All Mountain 1 - 160 - TA	Volume (CC)	RH	60	LH	155
2007	All Mountain 2 - 140	Volume (CC)	RH	175	LH	175
2007	All Mountain 2 - 140 - QR	Volume (CC)	RH	175	LH	175
2007	All Mountain 2 - 140 - TA	Volume (CC)	RH	175	LH	175
2007	All Mountain 2 - 160	Volume (CC)	RH	175	LH	175

2007	All Mountain 2 - 160 - QR	Volume (CC)	RH	175	LH	175
2007	All Mountain 2 - 160 - TA	Volume (CC)	RH	175	LH	175
2007	All Mountain 3 - 140	Volume (CC)	RH	20	LH	170
2007	All Mountain 3 - 140 - QR	Volume (CC)	RH	20	LH	170
2007	All Mountain 3 - 140 - TA	Volume (CC)	RH	20	LH	170
2007	All Mountain 3 - 160	Volume (CC)	RH	20	LH	170
2007	All Mountain 3 - 160 - QR	Volume (CC)	RH	20	LH	170
2007	All Mountain 3 - 160 - TA	Volume (CC)	RH	20	LH	170
2007	All Mountain 4 - 140	Volume (CC)	RH	160	LH	140
2007	All Mountain 4 - 140 - QR	Volume (CC)	RH	160	LH	140
2007	All Mountain 4 - 140 - TA	Volume (CC)	RH	160	LH	140
2007	All Mountain 4 - 160	Volume (CC)	RH	160	LH	140
2007	All Mountain 4 - 160 - QR	Volume (CC)	RH	160	LH	140
2007	All Mountain 4 - 160 - TA	Volume (CC)	RH	160	LH	140
2007	All Mountain SL1 ATA	Volume (CC)	RH	50	LH	15
2007	All Mountain SL1 ATA - QR	Volume (CC)	RH	50	LH	15
2007	All Mountain SL1 ATA - TA	Volume (CC)	RH	50	LH	15
2007	All Mountain SL2	Volume (CC)	RH	60	LH	15
2007	All Mountain SL2 - QR	Volume (CC)	RH	60	LH	15
2007	All Mountain SL2 - TA	Volume (CC)	RH	60	LH	15
2007	Corsa SL Race - 100	Volume (CC)	RH	20	LH	20
2007	Corsa SL Race - 80	Volume (CC)	RH	20	LH	20
2007	Corsa SL World Cup - 100	Volume (CC)	RH	20	LH	20
2007	Corsa SL World Cup - 80	Volume (CC)	RH	20	LH	20
2007	Dirt Jumper 1 - 100	Volume (CC)	RH	175	LH	175
2007	Dirt Jumper 1 - 100 - TA	Volume (CC)	RH	175	LH	175
2007	Dirt Jumper 1 - 80	Volume (CC)	RH	175	LH	175
2007	Dirt Jumper 1 - 80 - TA	Volume (CC)	RH	175	LH	175
2007	Dirt Jumper 2 - 100	Volume (CC)	RH	175	LH	175
2007	Dirt Jumper 2 - 100 - TA	Volume (CC)	RH	175	LH	175
2007	Dirt Jumper 2 - 80	Volume (CC)	RH	175	LH	175
2007	Dirt Jumper 2 - 80 - TA	Volume (CC)	RH	175	LH	175
2007	Dirt Jumper 3 - 100	Volume (CC)	RH	160	LH	7.5
2007	Dirt Jumper 3 - 100 - TA	Volume (CC)	RH	160	LH	7.5
2007	Dirt Jumper 3 - 80	Volume (CC)	RH	160	LH	7.5
2007	Dirt Jumper 3 - 80 - TA	Volume (CC)	RH	160	LH	7.5
2007	Dirt Jumper 3 Steel Tube - 100	Volume (CC)	RH	200	LH	7.5
2007	Dirt Jumper 3 Steel Tube - 100 - TA	Volume (CC)	RH	200	LH	7.5
2007	Dirt Jumper 3 Steel Tube - 80	Volume (CC)	RH	200	LH	7.5
2007	Dirt Jumper 3 Steel Tube - 80 - TA	Volume (CC)	RH	200	LH	7.5
2007	Dirt Jumper 4 - 100	Volume (CC)	RH	7.5	LH	7.5
2007	Dirt Jumper 4 - 100 - TA	Volume (CC)	RH	7.5	LH	7.5
2007	Dirt Jumper 4 - 120	Volume (CC)	RH	7.5	LH	7.5
2007	Dirt Jumper 4 - 120 - TA	Volume (CC)	RH	7.5	LH	7.5
2007	Dirt Jumper 4 - 80	Volume (CC)	RH	7.5	LH	7.5
2007	Dirt Jumper 4 - 80 - TA	Volume (CC)	RH	7.5	LH	7.5
2007	MX Pro - 100	Volume (CC)	RH	130	LH	130
2007	MX Pro - 120	Volume (CC)	RH	130	LH	130
2007	MX Pro - 80	Volume (CC)	RH	130	LH	130
2007	MX Pro ETA - 100	Volume (CC)	RH	135	LH	125

2007	MX Pro ETA - 120	Volume (CC)	RH	135	LH	125
2007	MX Pro LO - 100	Volume (CC)	RH	135	LH	7.5
2007	MX Pro LO - 120	Volume (CC)	RH	135	LH	7.5
2007	MX Pro LO RC - 100	Volume (CC)	RH	135	LH	7.5
2007	MX Pro LO RC - 120	Volume (CC)	RH	135	LH	7.5
2007	MZ Race - 100	Volume (CC)	RH	7.5	LH	7.5
2007	MZ Race - 120	Volume (CC)	RH	7.5	LH	7.5
2007	MZ Super Comp - 100	Volume (CC)	RH	7.5	LH	7.5
2007	MZ Super Comp - 120	Volume (CC)	RH	7.5	LH	7.5
2007	Super T - 170	Volume (CC)	RH	255	LH	255
2007	Super T RCV - 180	Volume (CC)	RH	255	LH	255
2007	Super T RV - 180	Volume (CC)	RH	255	LH	255
2007	TXC 1 - 60	Volume (CC)	RH	100	LH	100
2007	TXC 1 - 80	Volume (CC)	RH	100	LH	100
2007	TXC 2 - 60	Volume (CC)	RH	255	LH	7.5
2007	TXC 2 - 80	Volume (CC)	RH	255	LH	7.5
2007	TXC ECC- 60	Volume (CC)	RH	255	LH	100
2007	TXC ECC- 80	Volume (CC)	RH	255	LH	100
2007	TXC LO - 60	Volume (CC)	RH	255	LH	7.5
2007	TXC LO - 80	Volume (CC)	RH	255	LH	7.5
2007	XC 400 - 100	Volume (CC)	RH	150	LH	50
2007	XC 400 - 130	Volume (CC)	RH	150	LH	50
2007	XC 500 - 100 - TST 2	Volume (CC)	RH	50	LH	160
2007	XC 500 - 100 - TST 5	Volume (CC)	RH		LH	
2007	XC 500 - 120 -TST 2	Volume (CC)	RH	150	LH	50
2007	XC 500 - 130 - TST 2	Volume (CC)	RH	50	LH	160
2007	XC 500 - 130 - TST 5	Volume (CC)	RH		LH	
2007	XC 600 - 100	Volume (CC)	RH	145	LH	145
2007	XC 600 - 130	Volume (CC)	RH	145	LH	145
2007	XC 600 Remote Control - 100	Volume (CC)	RH	145	LH	145
2007	XC 600 Remote Control - 130	Volume (CC)	RH	145	LH	145
2007	XC 600 SL	Volume (CC)	RH	50	LH	50
2007	XC 700 - 100	Volume (CC)	RH	50	LH	155
2007	XC 700 - 130	Volume (CC)	RH	50	LH	155
2007	XC 700 SL	Volume (CC)	RH	50	LH	50
2007	Z1 Drop Off - 150	Volume (CC)	RH	180	LH	180
2007	Z1 Drop Off - 150 - TA	Volume (CC)	RH	180	LH	180
2007	Z1 RC2 ETA - 150 - TA	Volume (CC)	RH	135	LH	165
2007	Z1 Sport RCV - 150 - TA	Volume (CC)	RH	150	LH	150
2007	Z1 Sport RV - 150 - TA	Volume (CC)	RH	150	LH	150
2008	4X World Cup - 100	Volume (CC)	RH		LH	
2008	55 ATA	Volume (CC)	RH	50	LH	50
2008	55 ATA2	Volume (CC)	RH	50	LH	50
2008	55 ETA	Volume (CC)	RH	50	LH	
2008	55 TST2 - 140	Volume (CC)	RH		LH	50
2008	66 ATA	Volume (CC)	RH	305	LH	50
2008	66 RC-3	Volume (CC)	RH	280	LH	250
2008	66 RC-3 - 1.5	Volume (CC)	RH	280	LH	250
2008	888 ATA World Cup	Volume (CC)	RH	310	LH	50
2008	888 RC-3	Volume (CC)	RH	310	LH	310



2008	888 RC-3 World Cup	Volume (CC)	RH	310	LH	310
2008	888 RCV	Volume (CC)	RH	310	LH	310
2008	DIRT JUMPER 1 TA - 100	Volume (CC)	RH	50	LH	
2008	DIRT JUMPER 2 STD - 100	Volume (CC)	RH	50	LH	
2008	DIRT JUMPER 3 STD - 100	Volume (CC)	RH	7.5	LH	
2008	MARATHON CORSA LT - 100	Volume (CC)	RH	50	LH	165
2008	MARATHON CORSA LT - 120	Volume (CC)	RH	50	LH	165
2008	MARATHON CORSA SL World Cup - 100	Volume (CC)	RH	50	LH	20
2008	MARATHON CORSA SL World Cup - 80	Volume (CC)	RH	50	LH	20
2008	MX Pro - 100	Volume (CC)	RH	130	LH	130
2008	MX Pro - 120	Volume (CC)	RH	130	LH	130
2008	MX PRO LO - 100	Volume (CC)	RH	7.5	LH	
2008	MX PRO LO - 120	Volume (CC)	RH	7.5	LH	
2008	MX PRO LO - 80	Volume (CC)	RH	7.5	LH	
2008	MX PRO LO RC - 100	Volume (CC)	RH	7.5	LH	
2008	MX PRO LO RC - 120	Volume (CC)	RH	7.5	LH	
2008	MZ SUPERCOMP - 100	Volume (CC)	RH	7.5	LH	7.5
2008	Super T RCV - 180	Volume (CC)	RH	255	LH	255
2008	XC 500 ETA - 100	Volume (CC)	RH	7.5	LH	140
2008	XC 600 ATA2 - 100 >140	Volume (CC)	RH	20	LH	50
2008	XC 700 ATA	Volume (CC)	RH	50	LH	20
2008	Z1 RC2 ETA - 150 - TA	Volume (CC)	RH	165	LH	135
2009	CORSA CENTO	Volume (CC)	RH	sfa 10	LH	80 tst
2009	CORSA TST2	Volume (CC)	RH	50 tst2	LH	150
2009	CORSA LO	Volume (CC)	RH	130	LH	grease
2009	44 ATA Micro	Volume (CC)	RH	10 ata	LH	80 tst
2009	44 ATA	Volume (CC)	RH	50 tst2	LH	10 ata
2009	44 TST2	Volume (CC)	RH	50 tst2	LH	150
2009	44 LO	Volume (CC)	RH	130	LH	grease
2009	33 TST2	Volume (CC)	RH	grease	LH	grease
2009	33 LO	Volume (CC)	RH	grease	LH	grease
2009	33 R	Volume (CC)	RH	grease	LH	grease
2009	22 LO	Volume (CC)	RH	grease	LH	grease
2009	22 R	Volume (CC)	RH	grease	LH	grease
2009	55 ATA Micro	Volume (CC)	RH	15 ata	LH	100 tst
2009	55 RC3	Volume (CC)	RH	180	LH	180
2009	55 ATA	Volume (CC)	RH	80 tst2	LH	15 ata
2009	55 TST2	Volume (CC)	RH	80 tst2	LH	165
2009	55 R	Volume (CC)	RH	165	LH	10 R
2009	55 RS	Volume (CC)	RH	grease	LH	grease
2009	4X World Cup	Volume (CC)	RH	170	LH	170
2009	DIRT JUMPER 1	Volume (CC)	RH	175	LH	10 R
2009	DIRT JUMPER 2	Volume (CC)	RH	205	LH	10 R
2009	DIRT JUMPER 3	Volume (CC)	RH	grease	LH	grease
2009	Z.1 SPORT	Volume (CC)	RH	160	LH	10 R
2009	66 ATA	Volume (CC)	RH	20 ata	LH	305 rc3
2009	66 RC-3	Volume (CC)	RH	250	LH	280
2009	66 RCV	Volume (CC)	RH	260	LH	255
2009	888 ATA World Cup	Volume (CC)	RH	20	LH	310
2009	888 RC-3 World Cup	Volume (CC)	RH	310	LH	310

2009	888 RC-3 World Cup	Volume (CC)	RH	310	LH	310
2009	888 RC-3	Volume (CC)	RH	310	LH	310
2009	888 RCV	Volume (CC)	RH	310	LH	310
2009	888 RV 35mm	Volume (CC)	RH	240	LH	240
2010	22 LO - 100	Volume (CC)	RH	7,5	LH	7,5
2010	22 LO - 120	Volume (CC)	RH	7,5	LH	7,5
2010	22 LO RC - 100	Volume (CC)	RH	7,5	LH	7,5
2010	22 LO RC - 120	Volume (CC)	RH	7,5	LH	7,5
2010	22 RLO - 100	Volume (CC)	RH	7,5	LH	7,5
2010	22 RLO - 120	Volume (CC)	RH	7,5	LH	7,5
2010	22 RLO - 80	Volume (CC)	RH	7,5	LH	7,5
2010	22 RLO RC - 100	Volume (CC)	RH	7,5	LH	7,5
2010	22 RLO RC - 120	Volume (CC)	RH	7,5	LH	7,5
2010	22 RLO RC - 80	Volume (CC)	RH	7,5	LH	7,5
2010	33 RLO - 100	Volume (CC)	RH	7,5	LH	7,5
2010	33 RLO - 120	Volume (CC)	RH	7,5	LH	7,5
2010	33 RLO - 140	Volume (CC)	RH	7,5	LH	7,5
2010	33 RLO RC - 100	Volume (CC)	RH	7,5	LH	7,5
2010	33 RLO RC - 120	Volume (CC)	RH	7,5	LH	7,5
2010	33 RLO RC - 140	Volume (CC)	RH	7,5	LH	7,5
2010	33 TST2 - 100	Volume (CC)	RH	7,5	LH	7,5
2010	33 TST2 - 120	Volume (CC)	RH	7,5	LH	7,5
2010	33 TST2 - 140	Volume (CC)	RH	7,5	LH	7,5
2010	33 TST2 - 80	Volume (CC)	RH	7,5	LH	7,5
2010	33 TST2 RC - 100	Volume (CC)	RH	7,5	LH	7,5
2010	33 TST2 RC - 120	Volume (CC)	RH	7,5	LH	7,5
2010	33 TST2 RC - 140	Volume (CC)	RH	7,5	LH	7,5
2010	33 TST2 RC - 80	Volume (CC)	RH	7,5	LH	7,5
2010	44 29" MICRO TI - 100	Volume (CC)	RH	150	LH	50
2010	44 29" MICRO TI - 120	Volume (CC)	RH	150	LH	50
2010	44 29" MICRO TI - 140	Volume (CC)	RH	150	LH	50
2010	44 29" MICRO TI RC - 100	Volume (CC)	RH	150	LH	50
2010	44 29" MICRO TI RC - 120	Volume (CC)	RH	150	LH	50
2010	44 29" MICRO TI RC - 140	Volume (CC)	RH	150	LH	50
2010	44 29" TST2 - 100	Volume (CC)	RH	50	LH	150
2010	44 29" TST2 - 120	Volume (CC)	RH	50	LH	130
2010	44 29" TST2 - 140	Volume (CC)	RH	50	LH	130
2010	44 29" TST2 - 80	Volume (CC)	RH	50	LH	150
2010	44 29" TST2 RC - 100	Volume (CC)	RH	50	LH	150
2010	44 29" TST2 RC - 120	Volume (CC)	RH	50	LH	130
2010	44 29" TST2 RC - 140	Volume (CC)	RH	50	LH	130
2010	44 29" TST2 RC - 80	Volume (CC)	RH	50	LH	150
2010	44 MICRO TI - 120	Volume (CC)	RH	150	LH	50
2010	44 MICRO TI - 140	Volume (CC)	RH	150	LH	50
2010	44 MICRO TI RC - 120	Volume (CC)	RH	150	LH	50
2010	44 MICRO TI RC - 140	Volume (CC)	RH	150	LH	50
2010	44 RC3 TITANIUM	Volume (CC)	RH	180	LH	80
2010	44 RLO - 100	Volume (CC)	RH	7,5	LH	140
2010	44 RLO - 120	Volume (CC)	RH	7,5	LH	140
2010	44 RLO - 140	Volume (CC)	RH	7,5	LH	140

2010	44 RLO RC - 100	Volume (CC)	RH	7,5	LH	140
2010	44 RLO RC - 120	Volume (CC)	RH	7,5	LH	140
2010	44 RLO RC - 140	Volume (CC)	RH	7,5	LH	140
2010	44 TST2 Air - 120	Volume (CC)	RH	50	LH	120
2010	44 TST2 Air - 140	Volume (CC)	RH	50	LH	120
2010	44 TST2 Air RC - 120	Volume (CC)	RH	50	LH	120
2010	44 TST2 Air RC - 140	Volume (CC)	RH	50	LH	120
2010	44 TST2 Coil - 120	Volume (CC)	RH	50	LH	130
2010	44 TST2 Coil - 140	Volume (CC)	RH	50	LH	130
2010	44 TST2 Coil RC - 120	Volume (CC)	RH	50	LH	130
2010	44 TST2 Coil RC - 140	Volume (CC)	RH	50	LH	130
2010	4X RC3	Volume (CC)	RH	155	LH	50
2010	55 MICRO AIR TI	Volume (CC)	RH	210	LH	50
2010	55 MICRO TITANIUM	Volume (CC)	RH	215	LH	50
2010	55 RC3 TITANIUM	Volume (CC)	RH	245	LH	80
2010	55 RS - 140	Volume (CC)	RH	7,5	LH	7,5
2010	55 RS - 160	Volume (CC)	RH	7,5	LH	7,5
2010	55 RV	Volume (CC)	RH	50	LH	200
2010	55 TST2 Air	Volume (CC)	RH	50	LH	180
2010	55 TST2 Coil	Volume (CC)	RH	50	LH	170
2010	66 RC3	Volume (CC)	RH	80	LH	310
2010	66 RC3 TITANIUM	Volume (CC)	RH	80	LH	335
2010	66 RCV	Volume (CC)	RH	250	LH	255
2010	888 RC3 EVO	Volume (CC)	RH	80	LH	300
2010	888 RC3 EVO TITANIUM	Volume (CC)	RH	80	LH	320
2010	888 RCV	Volume (CC)	RH	380	LH	310
2010	888 RV 35mm	Volume (CC)	RH	240	LH	240
2010	CORSA MICRO TI	Volume (CC)	RH	180	LH	50
2010	CORSA RLO - 100	Volume (CC)	RH	7,5	LH	150
2010	CORSA RLO - 80	Volume (CC)	RH	7,5	LH	150
2010	CORSA RLO RC - 100	Volume (CC)	RH	7,5	LH	150
2010	CORSA RLO RC - 80	Volume (CC)	RH	7,5	LH	150
2010	CORSA TST2 - 100	Volume (CC)	RH	50	LH	150
2010	CORSA TST2 - 80	Volume (CC)	RH	50	LH	150
2010	CORSA TST2 RC - 100	Volume (CC)	RH	50	LH	150
2010	CORSA TST2 RC - 80	Volume (CC)	RH	50	LH	150
2010	DIRT JUMPER 1 - 100	Volume (CC)	RH	155	LH	50
2010	DIRT JUMPER 1 - 80	Volume (CC)	RH	155	LH	50
2010	DIRT JUMPER 2 - 100	Volume (CC)	RH	170	LH	50
2010	DIRT JUMPER 2 - 80	Volume (CC)	RH	170	LH	50
2010	DIRT JUMPER 3 - 100	Volume (CC)	RH	7,5	LH	7,5
2010	DIRT JUMPER 3 - 120	Volume (CC)	RH	7,5	LH	7,5
2010	DIRT JUMPER 3 - 80	Volume (CC)	RH	7,5	LH	7,5
2011	22 RLO - 100	Volume (CC)	RH	Grease	LH	Grease
2011	22 RLO RC - 120	Volume (CC)	RH	Grease	LH	Grease
2011	44 29" MICRO TI - 100	Volume (CC)	RH	150	LH	20
2011	44 29" MICRO TI - 120	Volume (CC)	RH	150	LH	20
2011	44 29" MICRO TI - 140	Volume (CC)	RH	150	LH	20
2011	44 29" MICRO TI RC - 100	Volume (CC)	RH	150	LH	20
2011	44 29" MICRO TI RC - 120	Volume (CC)	RH	150	LH	20

2011	44 29" MICRO TI RC - 140	Volume (CC)	RH	150	LH	20
2011	44 29" TST2 - 100	Volume (CC)	RH	20	LH	130
2011	44 29" TST2 - 120	Volume (CC)	RH	20	LH	130
2011	44 29" TST2 - 140	Volume (CC)	RH	20	LH	130
2011	44 29" TST2 - 80	Volume (CC)	RH	20	LH	130
2011	44 29" TST2 RC - 100	Volume (CC)	RH	20	LH	130
2011	44 29" TST2 RC - 120	Volume (CC)	RH	20	LH	130
2011	44 29" TST2 RC - 140	Volume (CC)	RH	20	LH	130
2011	44 29" TST2 RC - 80	Volume (CC)	RH	20	LH	130
2011	44 MICRO TI - 150	Volume (CC)	RH	20	LH	20
2011	44 MICRO TI RC - 150	Volume (CC)	RH	20	LH	20
2011	44 RC3 TITANIUM - 150	Volume (CC)	RH	180	LH	50
2011	44 RLO - 140	Volume (CC)	RH	7,5	LH	140
2011	44 RLO RC -140	Volume (CC)	RH	7,5	LH	140
2011	44 TST2 AIR - 130	Volume (CC)	RH	20	LH	130
2011	44 TST2 AIR - 150	Volume (CC)	RH	20	LH	130
2011	44 TST2 AIR RC - 130	Volume (CC)	RH	20	LH	130
2011	44 TST2 AIR RC - 150	Volume (CC)	RH	20	LH	130
2011	44 TST2 Coil - 150	Volume (CC)	RH	20	LH	130
2011	44 TST2 Coil RC - 150	Volume (CC)	RH	20	LH	130
2011	4X RC3	Volume (CC)	RH	155	LH	50
2011	55 MICRO TI	Volume (CC)	RH	20	LH	20
2011	55 RC3 TITANIUM	Volume (CC)	RH	245	LH	50
2011	55 RS - 140	Volume (CC)	RH	80	LH	230
2011	55 RS - 160	Volume (CC)	RH	80	LH	230
2011	55 RV - 140	Volume (CC)	RH	80	LH	200
2011	55 RV - 160	Volume (CC)	RH	80	LH	200
2011	55 TST2 AIR	Volume (CC)	RH	20	LH	170
2011	55 TST2 COIL	Volume (CC)	RH	20	LH	180
2011	66 RC3 EVO	Volume (CC)	RH	80	LH	320
2011	66 RC3 EVO TITANIUM	Volume (CC)	RH	80	LH	335
2011	66 RCV	Volume (CC)	RH	250	LH	300
2011	888 RC3 EVO	Volume (CC)	RH	80	LH	315
2011	888 RC3 EVO TITANIUM	Volume (CC)	RH	80	LH	335
2011	888 RCV	Volume (CC)	RH	380	LH	340
2011	888 RV 35mm	Volume (CC)	RH	240	LH	240
2011	888 RV 35mm - 170 - ELMOTO	Volume (CC)	RH		LH	
2011	CORSA SUPERLEGGERA - 100	Volume (CC)	RH	10	LH	10
2011	CORSA SUPERLEGGERA - 80	Volume (CC)	RH	10	LH	10
2011	CORSA SUPERLEGGERA LR - 080	Volume (CC)	RH	10	LH	10
2011	CORSA SUPERLEGGERA LR - 100	Volume (CC)	RH	10	LH	10
2011	CORSA SUPERLEGGERA LR - 120	Volume (CC)	RH	10	LH	10
2011	CORSA SUPERLEGGERA RC - 080	Volume (CC)	RH	10	LH	10
2011	CORSA SUPERLEGGERA RC - 100	Volume (CC)	RH	10	LH	10
2011	DIRT JUMPER 1 - 100	Volume (CC)	RH	155	LH	50
2011	DIRT JUMPER 1 - 80	Volume (CC)	RH		LH	
2011	DIRT JUMPER 2 - 100	Volume (CC)	RH	170	LH	50
2011	DIRT JUMPER 2 - 80	Volume (CC)	RH	170	LH	50
2011	DIRT JUMPER 3 - 100	Volume (CC)	RH	Grease	LH	Grease
2011	DIRT JUMPER 3 - 120	Volume (CC)	RH	Grease	LH	Grease

2011	DIRT JUMPER 3 - 80	Volume (CC)	RH	Grease	LH	Grease
2011	DJ COMP IS - 100	Volume (CC)	RH	Grease	LH	Grease
2011	DJ COMP IS - 80	Volume (CC)	RH	Grease	LH	Grease
2011	MARATHON LR - 100	Volume (CC)	RH	10	LH	10
2011	MARATHON LR - 120	Volume (CC)	RH	10	LH	10
2011	MARATHON LR - 80	Volume (CC)	RH	10	LH	10
2011	MARATHON R - 100	Volume (CC)	RH	10	LH	10
2011	MARATHON R - 120	Volume (CC)	RH	10	LH	10
2011	MARATHON R - 80	Volume (CC)	RH	10	LH	10
2012	44 29" MICRO TI - 100	Volume (CC)	RH	140	LH	20
2012	44 29" MICRO TI - 120	Volume (CC)	RH	140	LH	20
2012	44 29" MICRO TI - 140	Volume (CC)	RH	140	LH	20
2012	44 29" MICRO TI RC - 100	Volume (CC)	RH	140	LH	20
2012	44 29" MICRO TI RC - 120	Volume (CC)	RH	140	LH	20
2012	44 29" MICRO TI RC - 140	Volume (CC)	RH	140	LH	20
2012	44 29" TST2 - 100	Volume (CC)	RH	20	LH	150
2012	44 29" TST2 - 120	Volume (CC)	RH	20	LH	130
2012	44 LR - 130	Volume (CC)	RH	20	LH	20
2012	44 LR - 150	Volume (CC)	RH	20	LH	20
2012	44 LR SWITCH TA - 150>120	Volume (CC)	RH	20	LH	20
2012	44 MICRO SWITCH TA - 150>120	Volume (CC)	RH	20	LH	20
2012	44 MICRO SWITCH TA RC - 150>120	Volume (CC)	RH	20	LH	20
2012	44 MICRO TI - 150	Volume (CC)	RH	20	LH	20
2012	44 RC3 TITANIUM - 150	Volume (CC)	RH	50	LH	180
2012	44 RLO - 100	Volume (CC)	RH	Grease	LH	Grease
2012	44 RLO - 120	Volume (CC)	RH	Grease	LH	Grease
2012	44 RLO - 140	Volume (CC)	RH	Grease	LH	Grease
2012	44 RLO - 80	Volume (CC)	RH	Grease	LH	Grease
2012	44 RLO RC - 140	Volume (CC)	RH	Grease	LH	Grease
2012	4X - 100	Volume (CC)	RH	20	LH	20
2012	55 CR - 170	Volume (CC)	RH	20	LH	20
2012	55 CR SWITCH TA - 170>130	Volume (CC)	RH	20	LH	20
2012	55 MICRO SWITCH TA - 160>120	Volume (CC)	RH	20	LH	20
2012	55 MICRO TI - 160	Volume (CC)	RH	20	LH	20
2012	55 R - 160	Volume (CC)	RH	20	LH	220
2012	55 R - 170	Volume (CC)	RH	20	LH	220
2012	55 RC3 EVO TITANIUM -170	Volume (CC)	RH	100	LH	230
2012	55 RS - 140	Volume (CC)	RH	80	LH	220
2012	55 RS - 160	Volume (CC)	RH	80	LH	220
2012	66 CR	Volume (CC)	RH	280	LH	80
2012	66 RC3 EVO	Volume (CC)	RH	80	LH	320
2012	66 RC3 EVO TITANIUM	Volume (CC)	RH	80	LH	325
2012	66 RCV	Volume (CC)	RH	230	LH	285
2012	888 CR	Volume (CC)	RH	400	LH	80
2012	888 RC3 EVO TITANIUM V2	Volume (CC)	RH	80	LH	335
2012	888 RC3 EVO V2	Volume (CC)	RH	80	LH	330
2012	888 RCV	Volume (CC)	RH	380	LH	340
2012	888 RV 35mm	Volume (CC)	RH	240	LH	240
2012	888 RV 35mm - 170 - ELMOTO	Volume (CC)	RH		LH	
2012	CORSA LR 29" - 100	Volume (CC)	RH	10	LH	10

2012	CORSA SL 29" - 100 (Hollow Crown)	Volume (CC)	RH	10	LH	10
2012	CORSA SL 29" CARBON - 100	Volume (CC)	RH	10	LH	10
2012	CORSA SL 29" CARBON RC - 100	Volume (CC)	RH	10	LH	10
2012	CORSA SL 29" RC - 100 (Hollow Crown)	Volume (CC)	RH	10	LH	10
2012	CORSA SL 29" RC - 80 (Hollow Crown)	Volume (CC)	RH	10	LH	10
2012	CORSA SUPERLEGGERA LR - 100	Volume (CC)	RH	10	LH	10
2012	CORSA SUPERLEGGERA LR - 120	Volume (CC)	RH	10	LH	10
2012	CORSA SUPERLEGGERA LR - 80	Volume (CC)	RH	10	LH	10
2012	CORSA SUPERLEGGERA RC - 080	Volume (CC)	RH	10	LH	10
2012	CORSA SUPERLEGGERA RC - 100	Volume (CC)	RH	10	LH	10
2012	DIRT JUMPER 1 - 100	Volume (CC)	RH	175	LH	50
2012	DIRT JUMPER 2 - 100	Volume (CC)	RH	180	LH	50
2012	DIRT JUMPER 3 - 100	Volume (CC)	RH	Grease	LH	Grease
2012	DIRT JUMPER 3 - 80	Volume (CC)	RH	Grease	LH	Grease
2012	DJ COMP - 100	Volume (CC)	RH	Grease	LH	Grease
2012	DJ COMP - 80	Volume (CC)	RH	Grease	LH	Grease
2012	MARATHON LR - 100	Volume (CC)	RH	10	LH	10
2012	MARATHON LR - 120	Volume (CC)	RH	10	LH	10
2012	MARATHON R - 100	Volume (CC)	RH	10	LH	10
2012	MARATHON R - 120	Volume (CC)	RH	10	LH	10
2013	44 29" MICRO SWITCH TA - 140>110	Volume (CC)	RH		LH	
2013	55 CR - 170	Volume (CC)	RH	20	LH	20
2013	55 MICRO SWITCH TA - 160>120	Volume (CC)	RH	20	LH	20
2013	55 R - 160	Volume (CC)	RH	20	LH	220
2013	55 RC3 EVO TITANIUM V2 -170	Volume (CC)	RH	100	LH	230
2013	888 CR	Volume (CC)	RH	400	LH	80
2013	888 RC3 EVO TITANIUM V2	Volume (CC)	RH	80	LH	325
2013	888 RC3 EVO V2	Volume (CC)	RH	80	LH	320
2013	CORSA SL 29" CARBON RC - 100	Volume (CC)	RH	10	LH	10
2013	CORSA SL 29" RC - 100 (Hollow Crown)	Volume (CC)	RH	10	LH	10
2013	CORSA SUPERLEGGERA LR - 100	Volume (CC)	RH	10	LH	10
2013	DIRT JUMPER 1 - 100	Volume (CC)	RH	50	LH	175
2013	DIRT JUMPER 3 - 100	Volume (CC)	RH	20	LH	20
2014	320 LCR - 100	Volume (CC)	RH	10	LH	10
2014	320 LCR CARBON - 100	Volume (CC)	RH	10	LH	10
2014	320 LR - 100	Volume (CC)	RH	10	LH	10
2014	350 CR - 160	Volume (CC)	RH	20	LH	20
2014	380 C2R2 TITANIUM	Volume (CC)	RH	60	LH	60
2014	44 29" MICRO SWITCH TA - 140>110	Volume (CC)	RH	10	LH	20
2014	55 CR - 170	Volume (CC)	RH	20	LH	20
2014	55 MICRO SWITCH TA - 160>120	Volume (CC)	RH	10	LH	20
2014	55 R - 160	Volume (CC)	RH	150	LH	20
2014	55 RC3 EVO TITANIUM V2 -170	Volume (CC)	RH	100	LH	230
2014	888 CR	Volume (CC)	RH	400	LH	80
2014	888 RC3 EVO V2	Volume (CC)	RH	80	LH	285
2014	CORSA SUPERLEGGERA LR - 100	Volume (CC)	RH	10	LH	10
2014	DIRT JUMPER 1 - 100	Volume (CC)	RH	50	LH	145
2014	DIRT JUMPER 3 - 100	Volume (CC)	RH	7,5	LH	7,5
2014	MARATHON LR - 100	Volume (CC)	RH	10	LH	10
2015	320 LCR - 100 - 29" Offset 51	Volume (CC)	RH	10	LH	10

2015	320 LCR - 27,5"	Volume (CC)	RH	10	LH	10
2015	320 LCR - 29" Offset 44	Volume (CC)	RH	10	LH	10
2015	320 LCR CARBON - 100 - 27,5"	Volume (CC)	RH	10	LH	10
2015	320 LCR CARBON - 100 - 29" Offset 44	Volume (CC)	RH	10	LH	10
2015	320 LCR CARBON - 100 - 29" Offset 46	Volume (CC)	RH	10	LH	10
2015	320 LR - 100 - 27,5"	Volume (CC)	RH	10	LH	10
2015	320 LR - 100 - 29" Offset 44	Volume (CC)	RH	10	LH	10
2015	320 LR - 100 - 29" Offset 51	Volume (CC)	RH	10	LH	10
2015	350 CR - 150	Volume (CC)	RH	25	LH	25
2015	350 CR - 160	Volume (CC)	RH	25	LH	25
2015	350 NCR - 160	Volume (CC)	RH	25	LH	25
2015	350 NCR TITANIUM - 160	Volume (CC)	RH	25	LH	200
2015	350 R - 140	Volume (CC)	RH		LH	
2015	350 R - 150	Volume (CC)	RH	150	LH	25
2015	350 R - 160	Volume (CC)	RH	150	LH	25
2015	380 C2R2 - 200	Volume (CC)	RH	80	LH	80
2015	380 C2R2 TITANIUM - 200	Volume (CC)	RH	80	LH	80
2015	380 CR - 200	Volume (CC)	RH	80	LH	80
2015	44 MICRO SWITCH TA 29" - 140>110	Volume (CC)	RH	20	LH	20
2015	55 CR - 170	Volume (CC)	RH	20	LH	20
2015	55 CR SLOPE - 120	Volume (CC)	RH	20	LH	20
2015	55 R - 160	Volume (CC)	RH	150	LH	20
2015	55 RC3 EVO TITANIUM V2 - 170	Volume (CC)	RH	100	LH	230
2015	888 CR - 180	Volume (CC)	RH	400	LH	80
2015	888 CR - 200	Volume (CC)	RH	400	LH	80
2015	CORSA LR - 100	Volume (CC)	RH	10	LH	10
2015	DIRT JUMPER 1 - 100	Volume (CC)	RH	50	LH	145
2015	DIRT JUMPER 2 - 100	Volume (CC)	RH	50	LH	180
2015	DIRT JUMPER 3 - 100	Volume (CC)	RH		LH	
2015	DIRT JUMPER 3 - 120	Volume (CC)	RH		LH	
2015	MARATHON LR - 100	Volume (CC)	RH	10	LH	10
2016	320 LCR - 100 - 27,5"	Volume (CC)	RH	10	LH	10
2016	320 LCR - 100 - 29"	Volume (CC)	RH	10	LH	10
2016	320 LR - 100 - 27,5"	Volume (CC)	RH	10	LH	10
2016	320 LR - 100 - 29"	Volume (CC)	RH	10	LH	10
2016	350 CR - 160	Volume (CC)	RH	25	LH	25
2016	350 NCR - 160	Volume (CC)	RH	25	LH	25
2016	350 NCR TITANIUM - 160	Volume (CC)	RH	200	LH	25
2016	350 R - 160	Volume (CC)	RH	25	LH	150
2016	380 C2R2 - 200	Volume (CC)	RH	80	LH	80
2016	380 C2R2 TITANIUM - 200	Volume (CC)	RH	80	LH	80
2016	380 CR - 200	Volume (CC)	RH	80	LH	80
2016	DJ 1 - 100	Volume (CC)	RH	145	LH	50
2016	DJ 3 - 100	Volume (CC)	RH	Grease	LH	Grease
2016	SLOPE CR - 120	Volume (CC)	RH	20	LH	20